

Community Liaison Committee

St Marys Cement Plant

December 11, 2025





Agenda

1. Welcome and Introductions
2. St Marys Cement Overview
3. Cement Association of Canada and St Marys Cement Sustainability Video
4. Complaints 2025 Year to Date
5. Odour Complaints 2017 to 2025
6. Dust Complaints Process
7. Alternative Low Carbon Fuels Updates
8. Questions Brought Forward in Advance
9. Round Table
10. Closing Remarks

Community Liaison Committee

Welcome and Introductions



Community Liaison Committee

The next Community Liaison Committee Meeting will be held on **Thursday, December 11th** at 6:00pm at the St. Marys Municipal Operations Center. Members of the public who wish to observe are welcome to attend.

Residents who wish to speak in front of the Committee may submit a detailed request in writing to the Committee. The request will be considered by the Committee and approved prior to the meeting.

Please submit all requests, questions, and concerns for the meeting to kara.pelissero@vcimentos.com by **Tuesday, December 9th at 10am.**

- Thank you to the Town of St Marys for allowing us to use their Youtube Channel and the Municipal Operations Center
- Welcome back everyone!
- Round Table Introductions
- Did anyone have questions/concerns about the September 13th meeting
- Format of Today's Meeting

St Marys Cement Overview

- Founded in 1912
- Employees 130
- 24 hour operation
- Industrial process of Cement Manufacturing
 - Quarry Operations
 - Raw Material Preparation
 - Kiln operations to create Clinker
 - Fuel of Petcoke and Alternative Low Carbon Fuels
 - Clinker grinding to make Cement
 - Shipments via trucking

Cement Association of Canada and St Marys Cement Sustainability Video

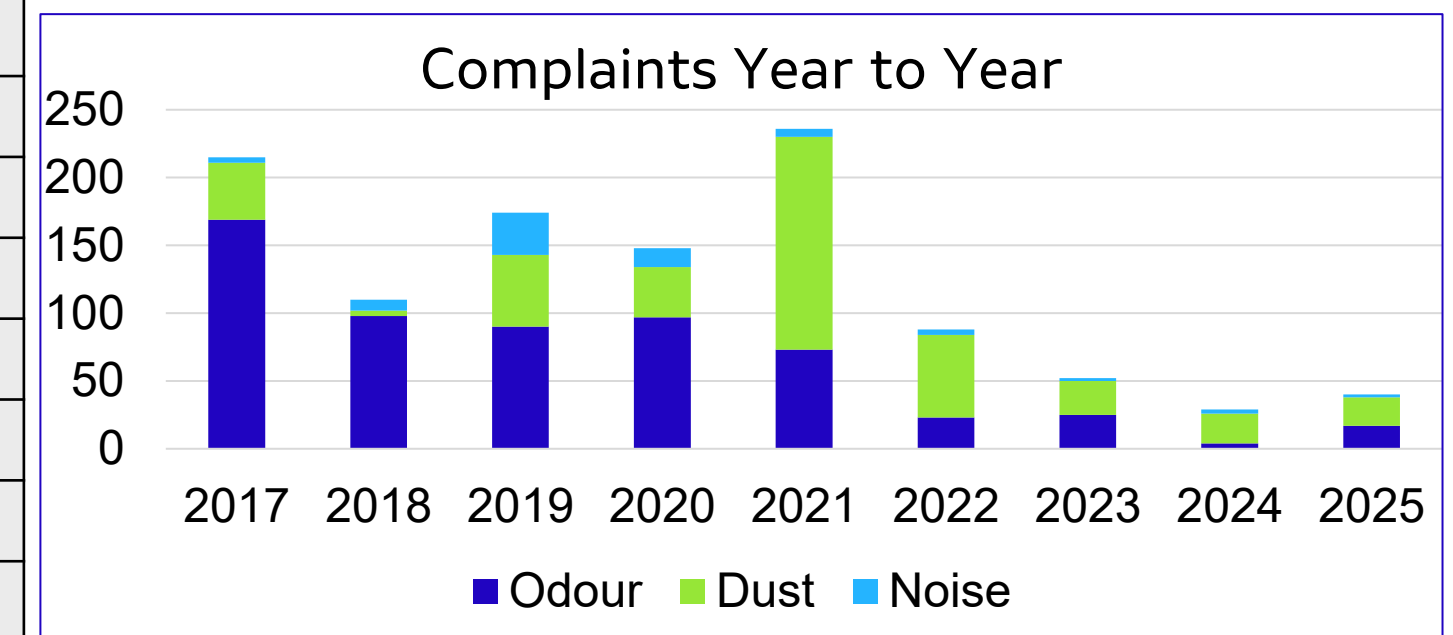
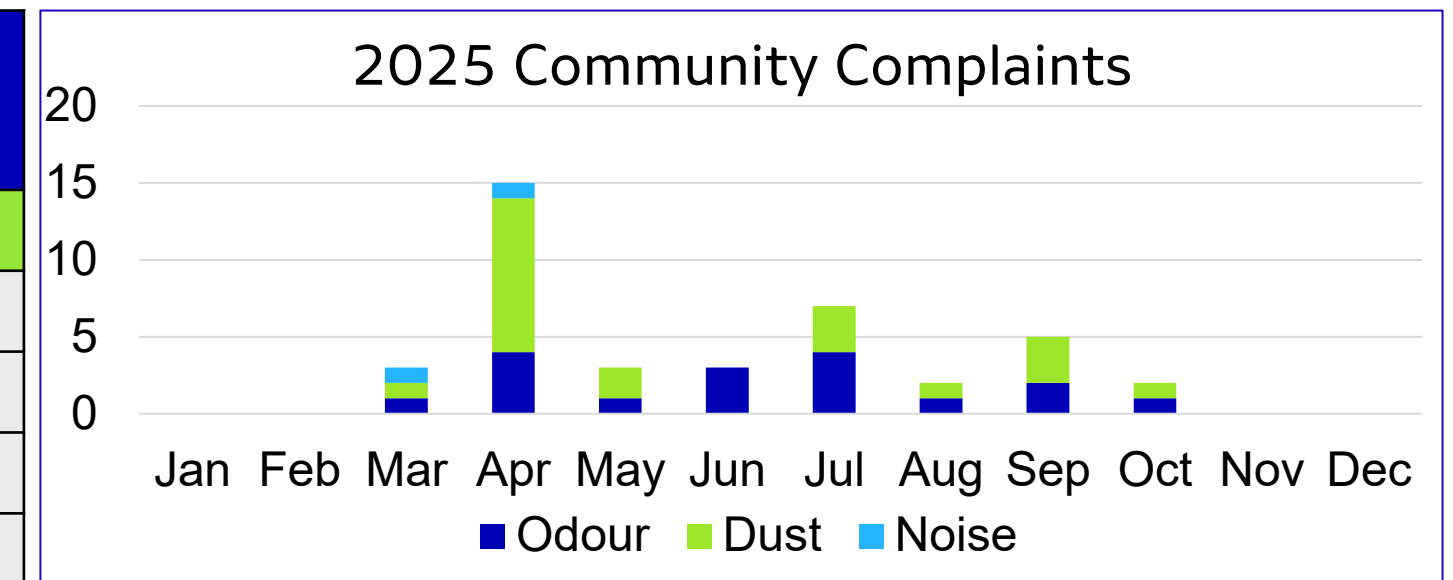
https://www.linkedin.com/posts/vcimentos-stmarys-cement_stmaryscement-ourvcway-activity-7399838711670276096-9A9R



Complaints Received

2025 Year to Date

		Odour*	Mention Health**	Dust	Invalid Dust	Noise/ Blasting
2025	Total	17	5	20	10	2
	January	0	0	0	0	0
	February	0	0	0	0	0
	March	1	0	1	0	1
	April	4	2	10	6	1
	May	1	0	1	0	0
	June	3	0	0	0	0
	July	4	2	3	1	0
	August	1	1	1	0	0
	September	2	0	3	2	0
	October	1	0	1	1	0
	November	0	0	0	0	0
	December					



* Odour complaints reviewed on the next slides

**Complaints which 'Mention Health' are counted when a resident calls with an odour complaint and highlights that they have health concerns. They are not separate complaints received by the plant.

Odour Monitoring using Enviro-Suite Software



Likely Originated from SMC

The trajectory generated by Enviro-Suite aligns with the location of the stack.



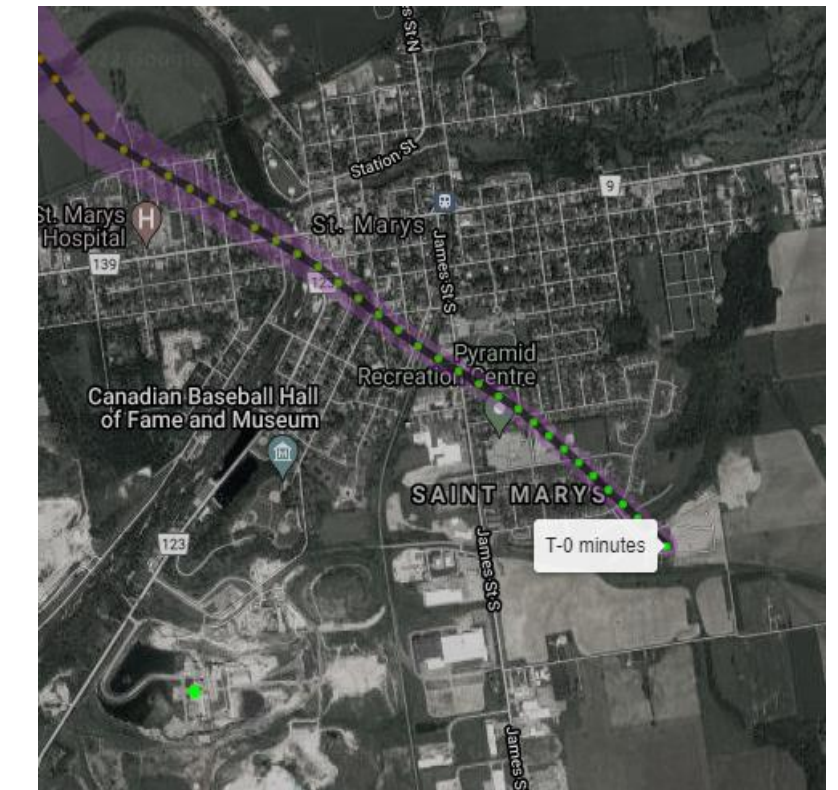
Possibly Originated from SMC

The trajectory generated by Enviro-Suite is close to aligning with the location of the stack.



Probably did not Originate from SMC

The trajectory generated by Enviro-Suite is not close to the stack but direction of the trajectory is towards SMC.



Did Not Originate from SMC

The trajectory generated by Enviro-Suite is clearly not in the direction of the stack.

Odour Monitoring using Enviro-Suite Software

Date	Enviro-Suite Results
Tuesday, September 23, 2025	Likely did not originate from SMC
Friday, September 26, 2025	Likely originated from SMC
Tuesday, October 21, 2025	Possibly Originated from SMC

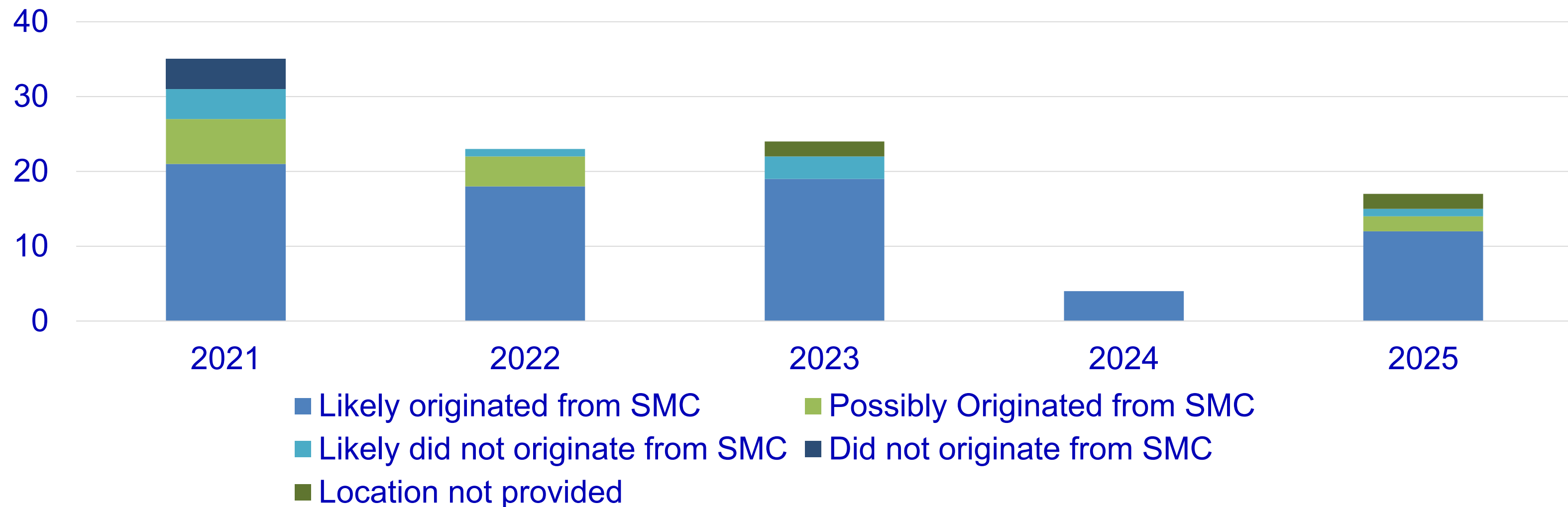
Enviro-Suite Results		
	2024 YE	2025 YTD
Likely Originated from SMC	4	12
Possibly Originated from SMC	0	2
Likely did not Originate from SMC	0	1
Location not Provided	0	2

* Out of Enviro-Suite complaints generated using the Enviro-Suite Software

Odour Monitoring using Enviro-Suite Software

2021 - 2025

Enviro-Suite Tracking, Odour Complaints July 2021 to 2025



Odour Complaints 2017 to 2025

Odour Testing

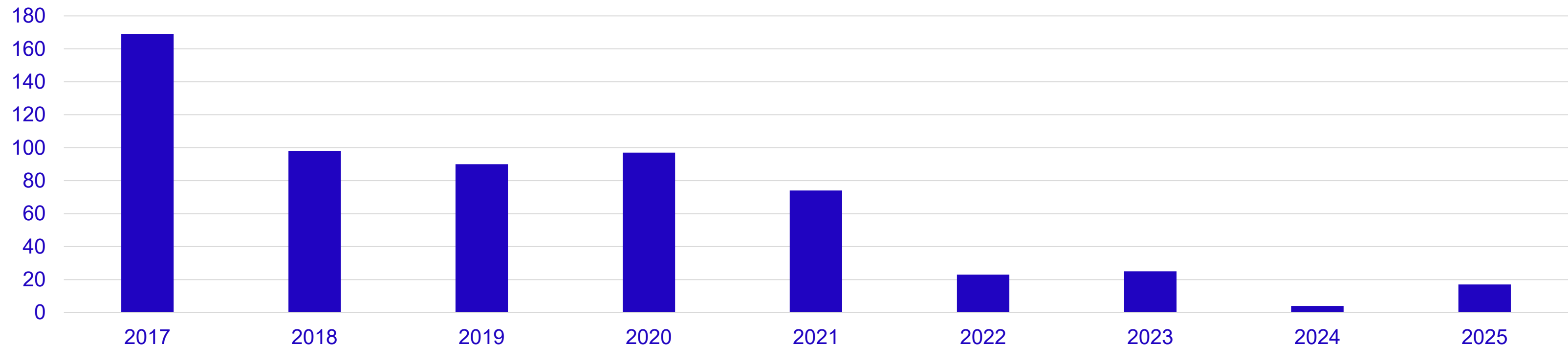
- In 2018 SMC completed lab-scale testing for determining odour contribution of our raw materials
- SMC analyzed numerous samples including raw materials, limestone samples, petroleum coke, and kiln feed mixtures
- Samples of limestone consistently tested higher in odour units than other samples
- Analysis of limestone showed odour concentrations are random at different depths
- Since limestone makes up 75-80% of our raw material mixture, it cannot be eliminated or substituted
- As a result of this testing, SMC focused odour abatement efforts on improving dispersion and raised the stack height by 30m in May 2020

Odour Complaints 2017 to 2025

Odour Subjectivity

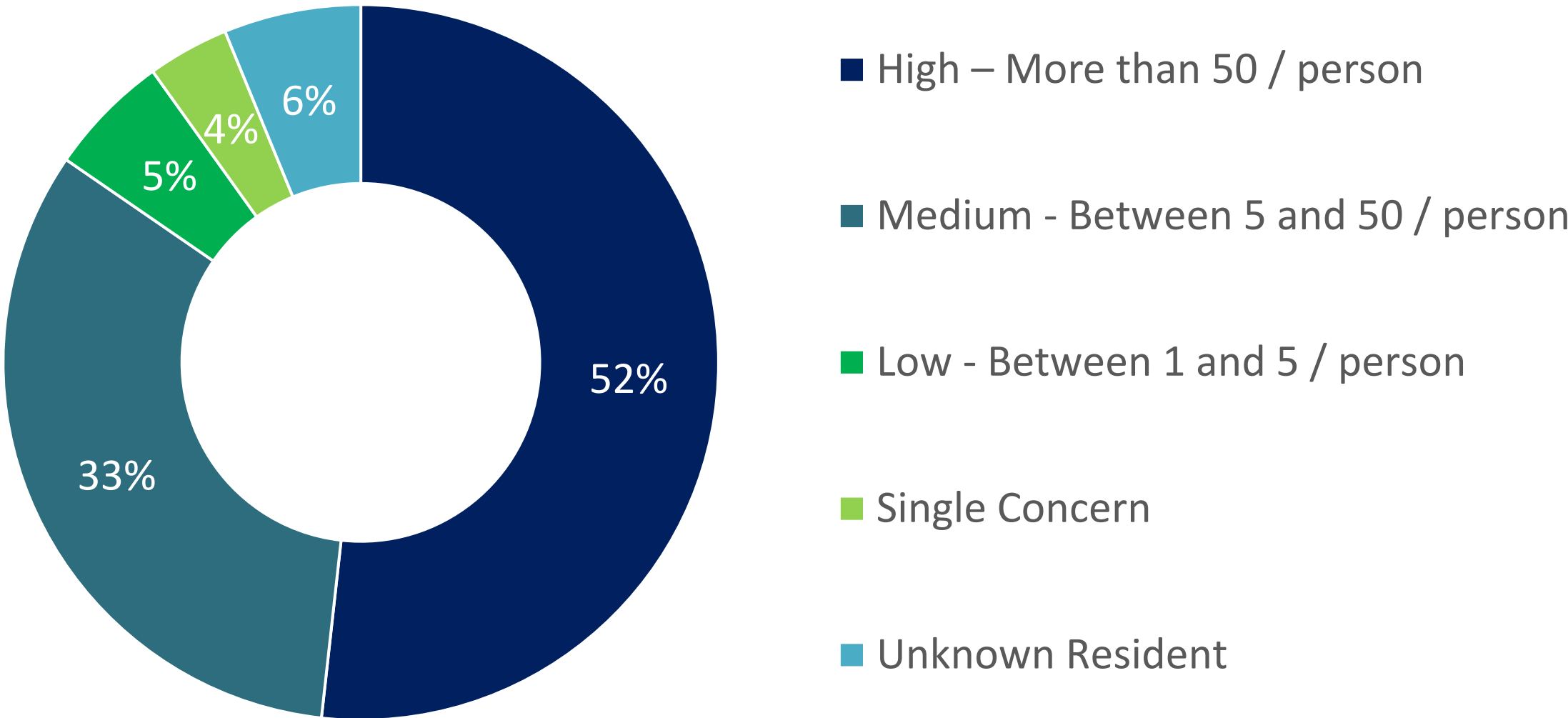
- It is noted that odour is subjective and varies between individuals. For example if one individual notices the odour as offensive another may not.
- St Marys Cement reports all odour complaints to the Ministry of Environment, Conservation and Parks as required by the ECA.
- Complaints reports include the date and time, wind direction, and location.

Total Odour Complaints Received



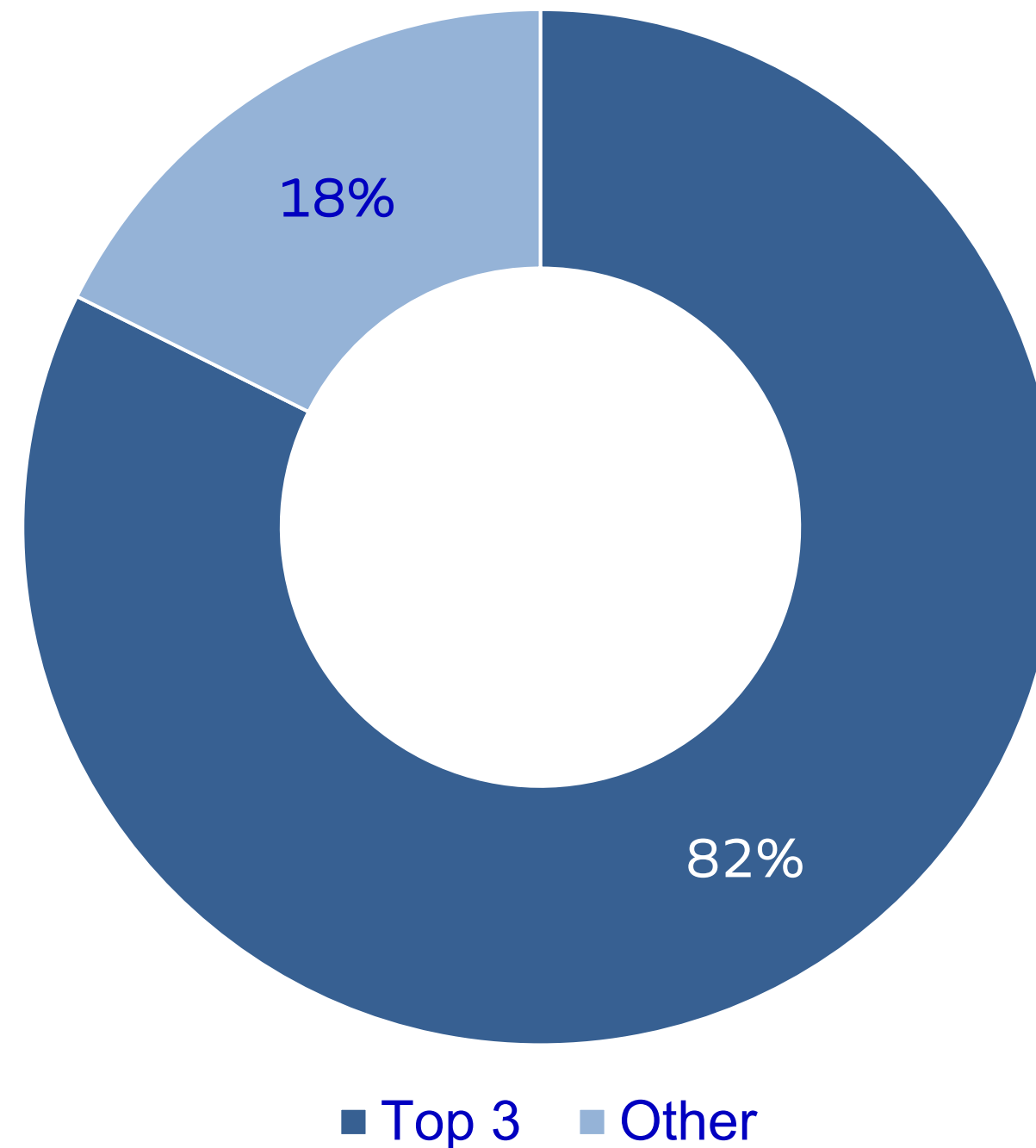
Odour Complaints 2017 to 2025

Complaints / Individual	Number of Residents	Number of Complaints	Percent of Total Complaints
High – More than 50 / person	3 residents	309	51.8%
Medium - Between 5 and 50 / person	16 residents	196	32.8%
Low - Between 1 and 5 / person	13 residents	33	5.5%
Single Concern	22 residents	22	3.7%
Unknown Resident	37	37	6.2%



Odour Complaints 2017 to 2025

2025 Odour Complaints

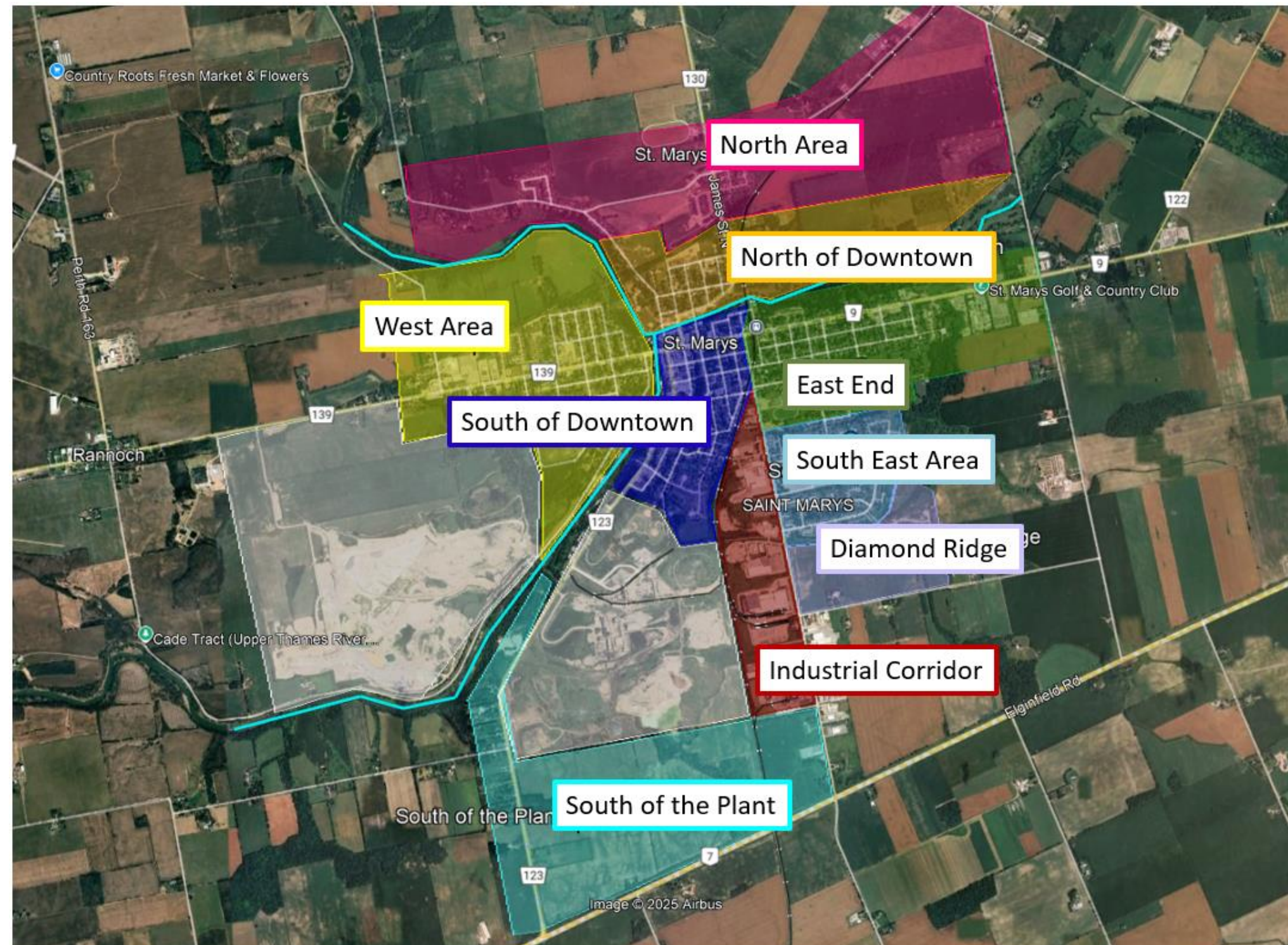


82% of Odour Complaints Received in 2025 came from 3 residents

Odour Complaints 2017 to 2025

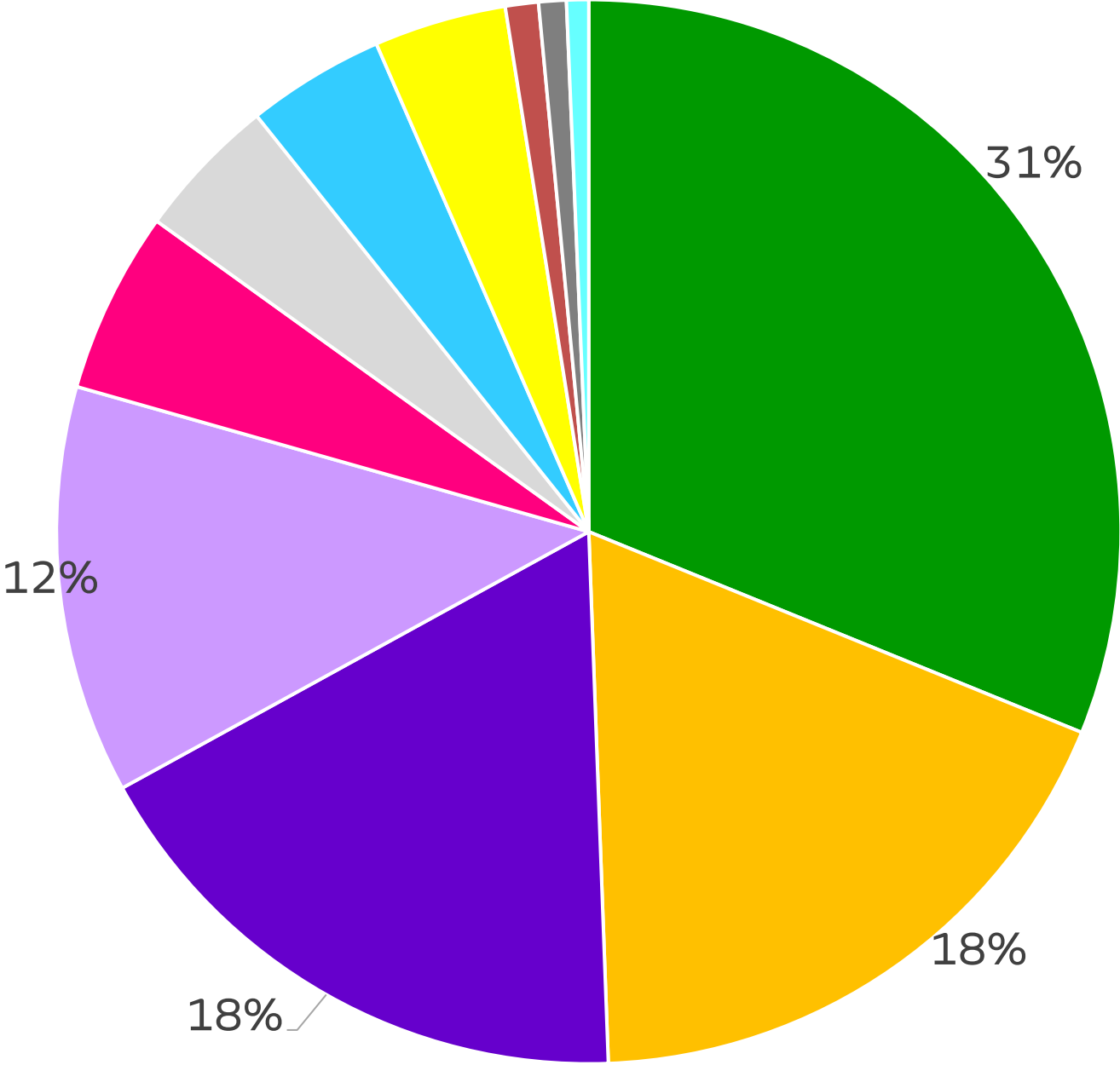
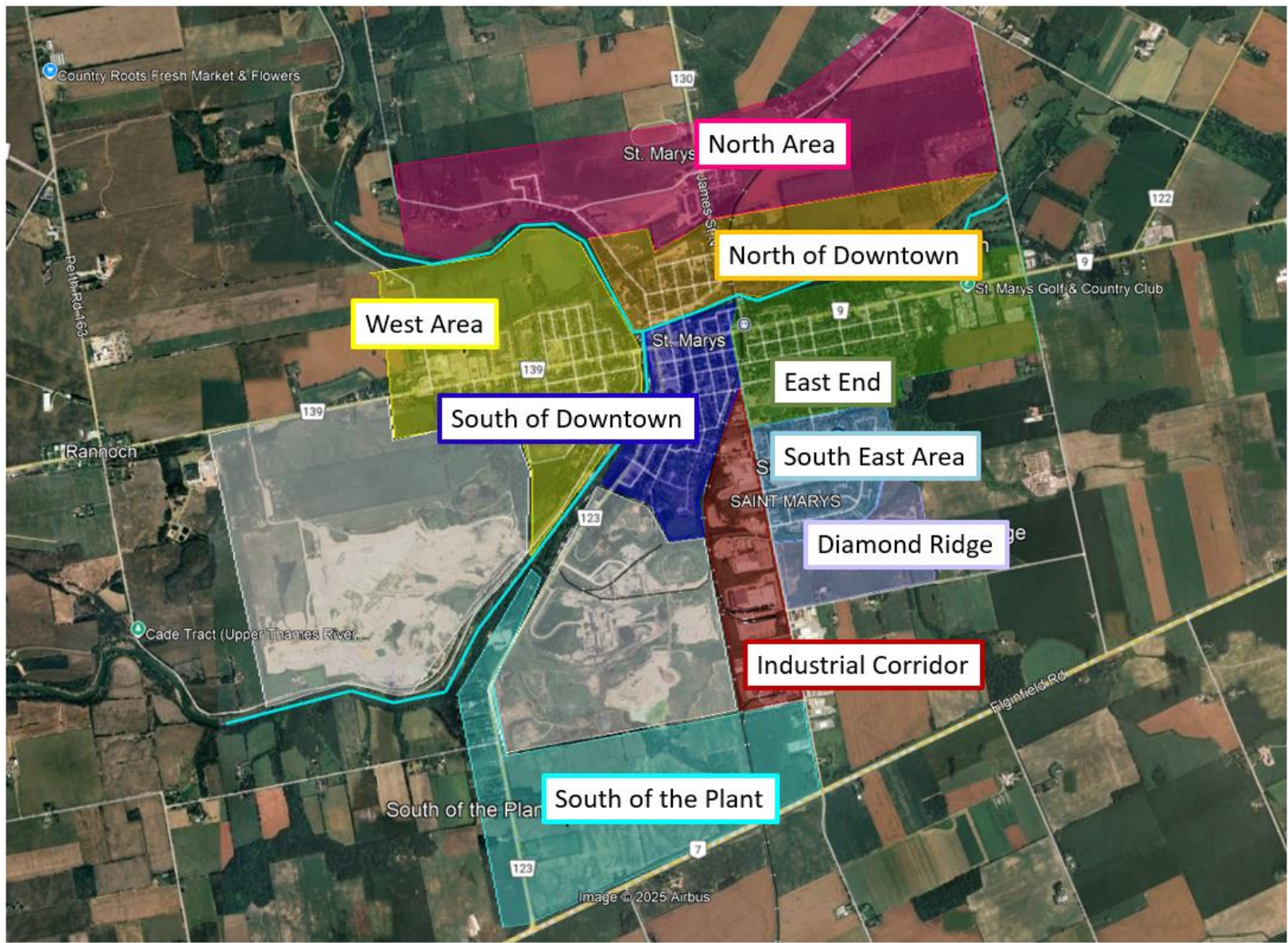
Complaint Location

- St Marys Cement divided the town into different areas based off geographical features (rivers and main roads)



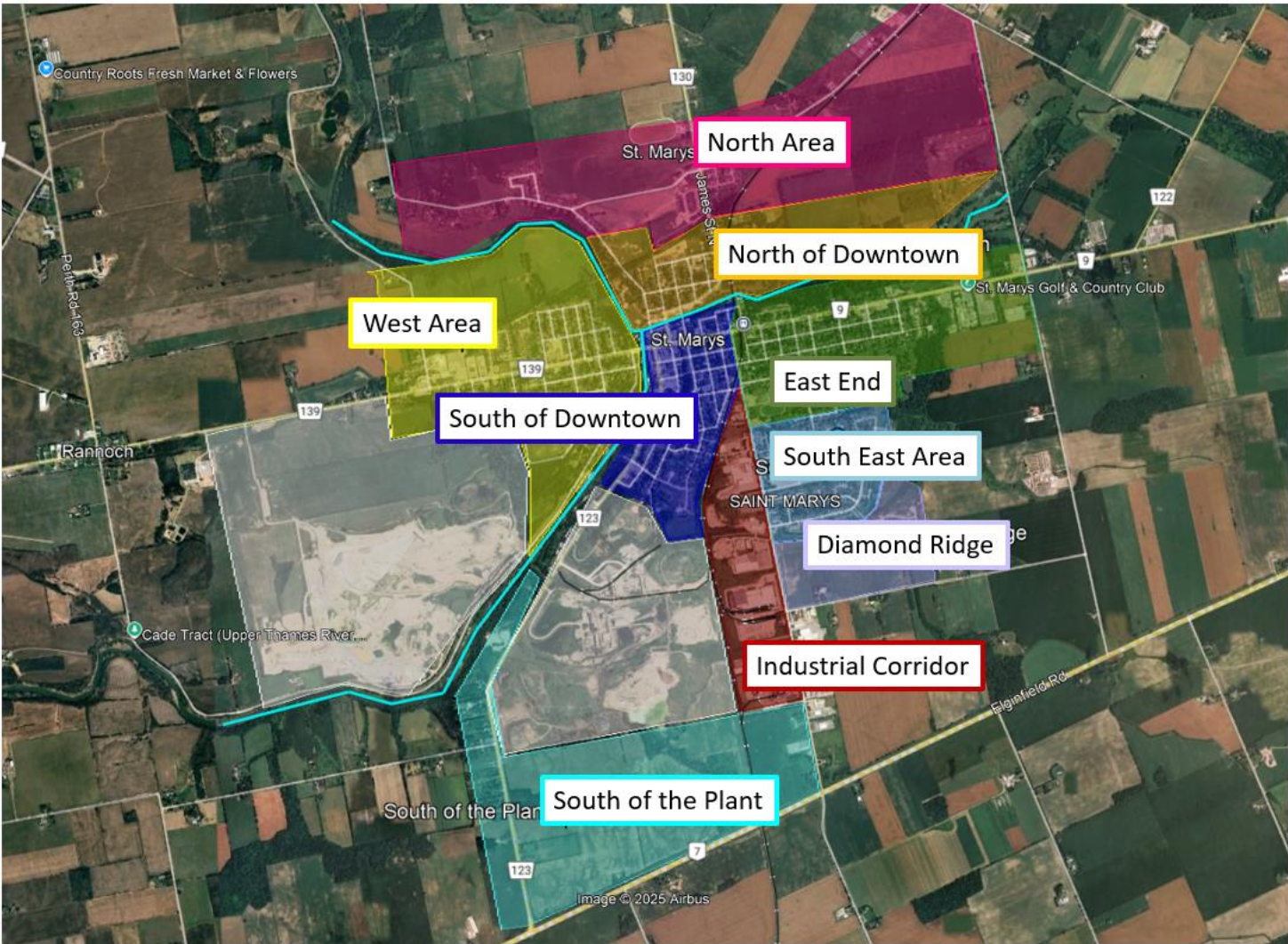
Odour Complaints 2017 to 2025

Complaint Locations



Odour Complaints 2017 to 2025

Complaint Locations



		Total Complaints	Total Individual Filing Complaints	Relative House Population
	East End	186	25	Highest
	North of Downtown	109	12	Medium
	South of Downtown	105	30	Highest
	Diamond Ridge	74	4	Low
	North Area	33	2	Low
	No Location Provided	26	23	n/a
	South East Area	25	10	Medium
	West Area	24	9	Medium
	Industrial Corridor	6	1	Lowest
	Out of Town	5	4	n/a
	South of the Plant	4	3	Lowest

Individuals who make complaints move around town and don't always make complaints relating to the same location.

Odour Complaints 2017 to 2025

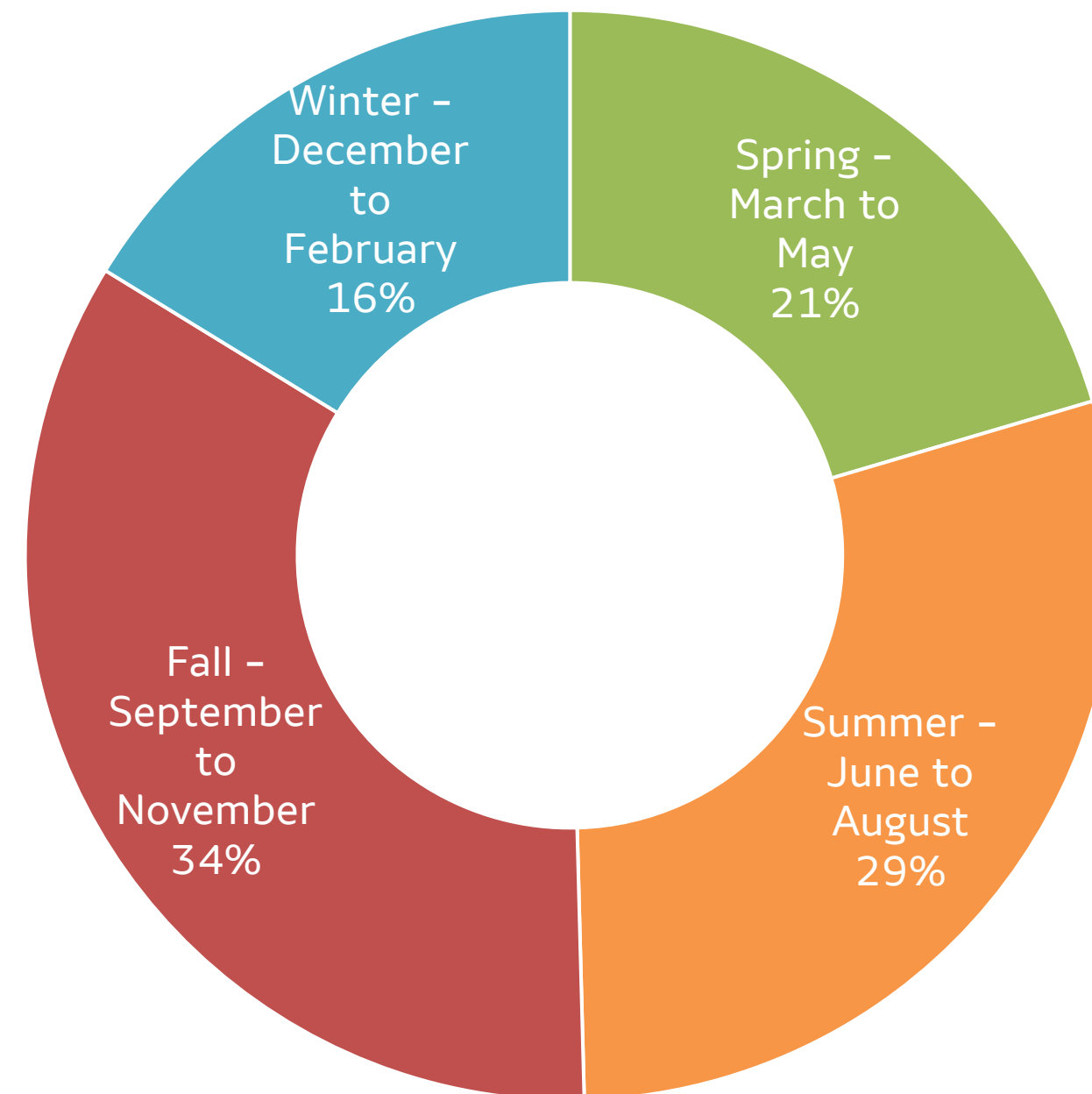
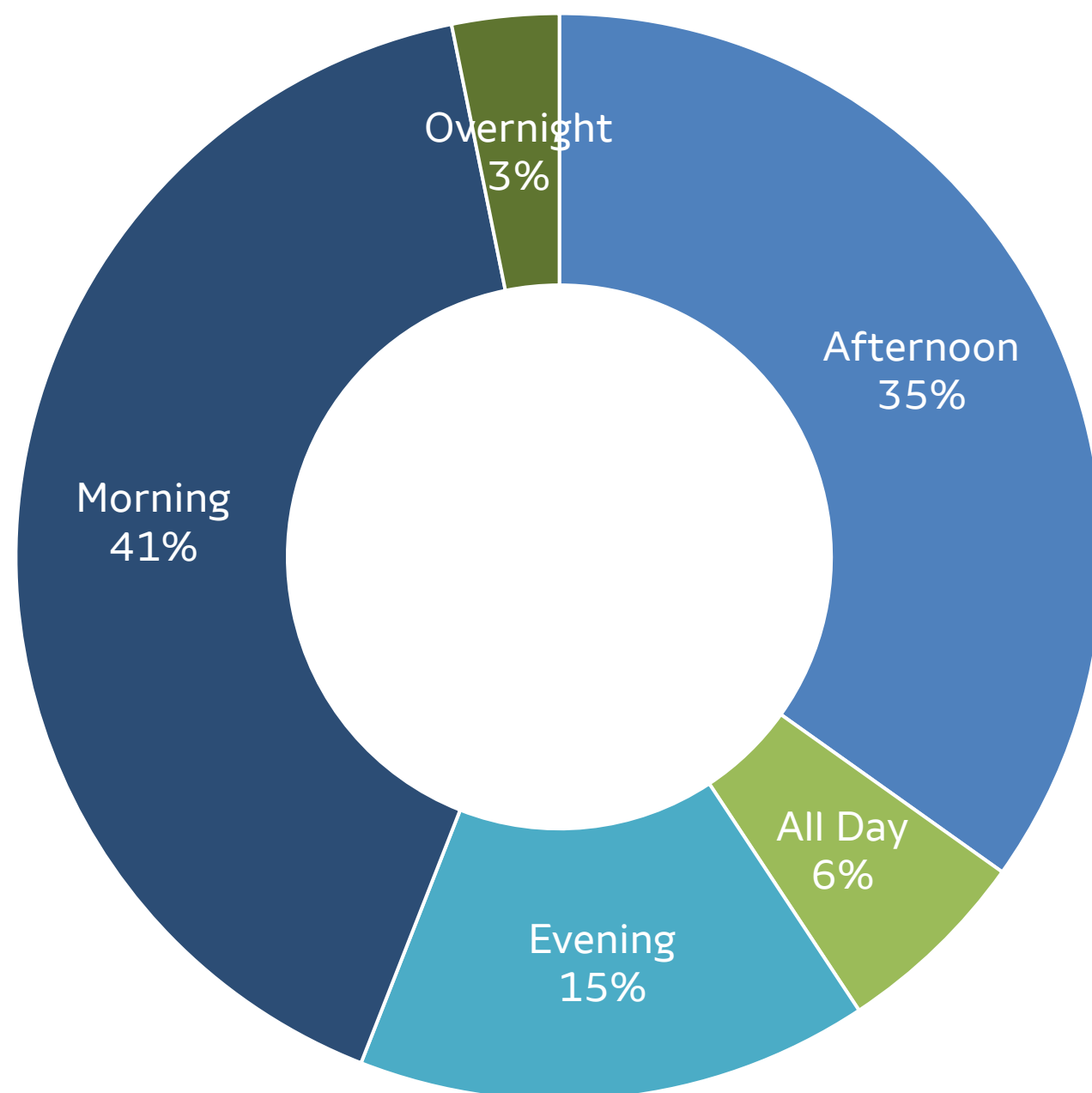
Weather Conditions – Wind Direction



The wind direction over the last 8 years has predominantly been from the South/Southwest towards the North/Northeast.

Odour Complaints 2017 to 2025

Weather Conditions –Time of Day



Dust Complaints Process

St Marys Cement has developed a procedure where the facility work with residents to address community dust concerns.

When SMC receives a dust concern from a resident, a representative from the cement plant promptly goes to the residence and takes a sample of dust off the vehicle.

- Complaints need to be prompt to ensure no contamination can occur.
- SMC uses deionized water and ash-less filter paper to remove the sample from the vehicle.
- Deionized water does not add any mineral contaminants to the sample.
- Hydration of the dust on the vehicle allows us to see how the dust reacts with water.
- Ash-less filter paper is critical in the analysis process.

The sample is taken from the windshield or sunroof of the vehicle for several reasons.

- Not from a painted surface to avoid scratching the paint
- Not from the rear window because a lot of dirt can be kicked up from the wheels and settle on the back vehicle.
- Not from the side windows because dust needs a horizontal surface to settle on.

SMC then analyzes the sample in the St Marys Cement lab to determine if it matches any of the raw materials or products at the facility. The test methods used at the lab are commonly used in the cement industry and we use the results to compare to our own on site products and materials.



Dust Complaints Process

While the sample is in the lab St Marys Cement begins the root cause investigation.

1. Complaint Location

- Location Relative to St Marys Cement operations
- Distance from the plant
- Location relative to other sources of dust (construction, farming activities, roadways (paved and unpaved), seasonal sources (ie. road salt or pollen).

2. Weather Conditions

- Wind Direction
- Wind Speed
- Rain / Moisture (dew)

3. Plant Conditions

- St Marys Cement employees are constantly observing for dust being emitted from any source on site
- If dust is identified then employees take immediate action to eliminate the dust
- Actions taken are recorded in a log.

Once analysis is back the facility compares data from the root cause investigation to the analysis results to determine if the material could have originated from St Marys Cement.



Dust Complaints Received

Date	Number of Complaints	Valid Complaints	Sample Results
9/9/2025	1	1	Cementitious; on site incident with transfer point; reportable incident.
9/22/2025	1	1	Cementitious; on site incident with transfer point; reportable incident.
10/6/2025	1	0	Not cementitious; sample contained fibrous particles not aligned with cement plant operations.

Alternative Low Carbon Fuels



ALCF Wood



ALCF Plastic

St Marys Cement started using ALCF in the process in May 2024.

As of November 30, 2025 SMC has used

1727 tons of wood

and

18,095 tons of plastic

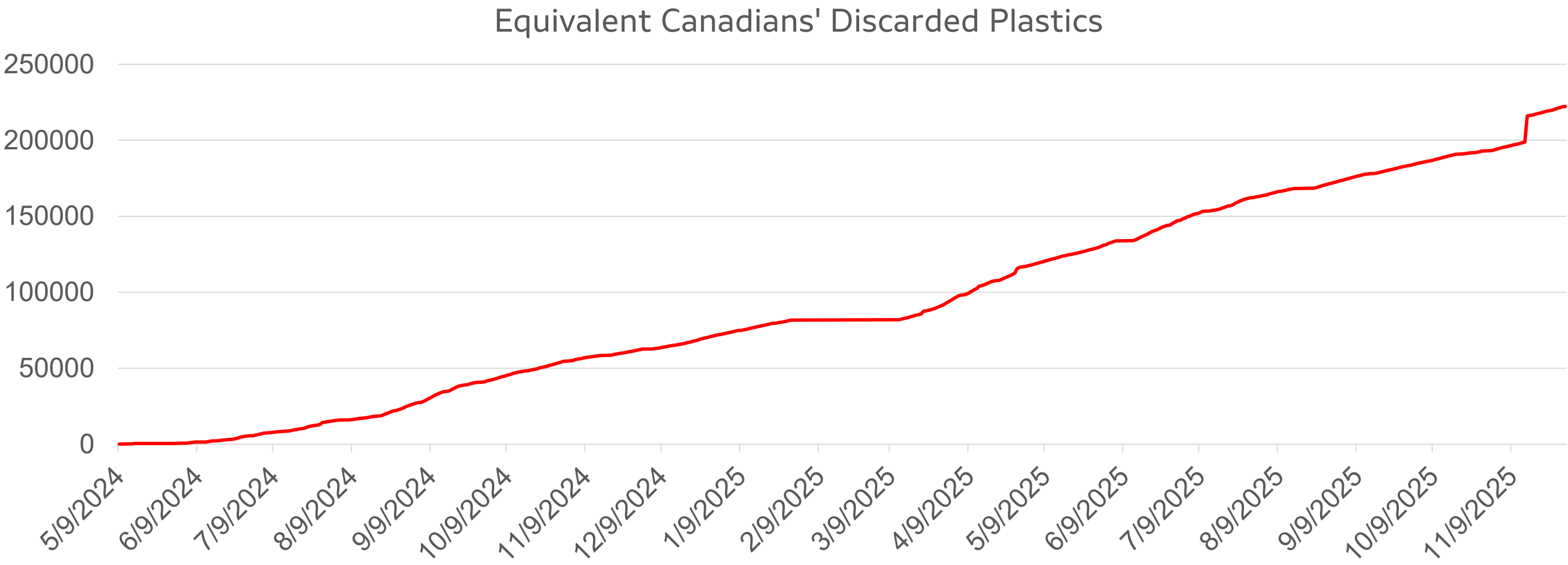
as Alternative Low Carbon Fuels.

Alternative Low Carbon Fuels

According to Statistics Canada in 2019 the average Canadian disposed of 105 kg of plastic.

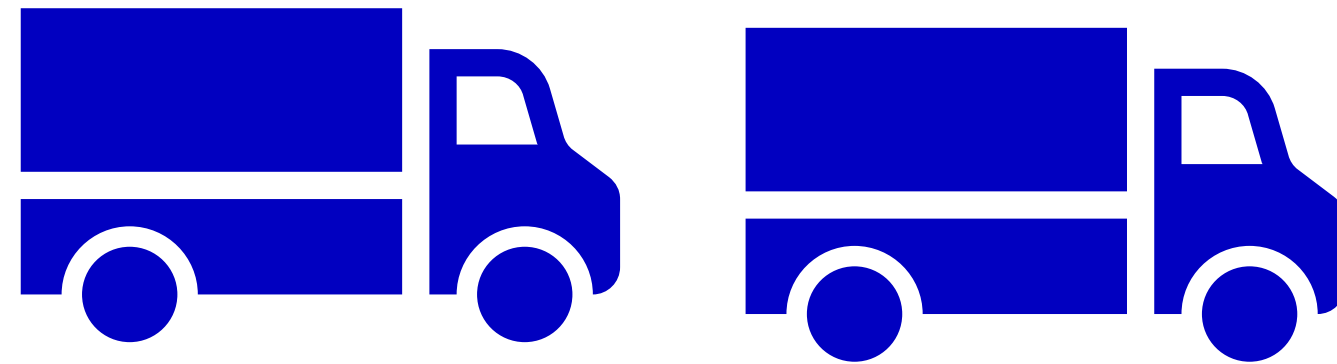
As of November 30 , 2025 the quantity of plastic used as ALCF at SMC is the equivalent of **222,251** Canadians' discarded plastic.

<https://www150.statcan.gc.ca/n1/daily-quotidien/230309/dq230309e-eng.htm>



Since May 2024 St Marys Cement has used **1015 trucks of plastic*** and **86 trucks of wood*** as Alternative Low Carbon Fuel.

<https://www150.statcan.gc.ca/n1/daily-quotidien/230309/dq230309e-eng.htm>



1015 trucks of plastic
Average 2 Trucks per day

Questions Brought Forward in Advance

None.

Round Table

**For any Questions or Concerns related to St Marys Cement
Plant Operations please contact**

Kara Pelissero – Environmental Manager
at 519-284-1020 x 235
or at
kara.pelissero@vcimentos.com

Upcoming Meetings
2026

Proper Shoveling Posture

A. Shoveling is a cold activity, warm up your spine by stretching first!



B. Bend your knees & keep your back straight



C. Keep your feet apart and have a strong low stance



D. Scoop and lift upwards with your legs, not your back



E. Don't shovel more than you can handle, don't strain your back by filling too much snow in the shovel



F. Keep the shovel close to your body making it easier to lift



G. Point your feet in the direction you want to throw the snow, don't twist your spine



H. Push the snow forward if possible, instead of throwing it to the side

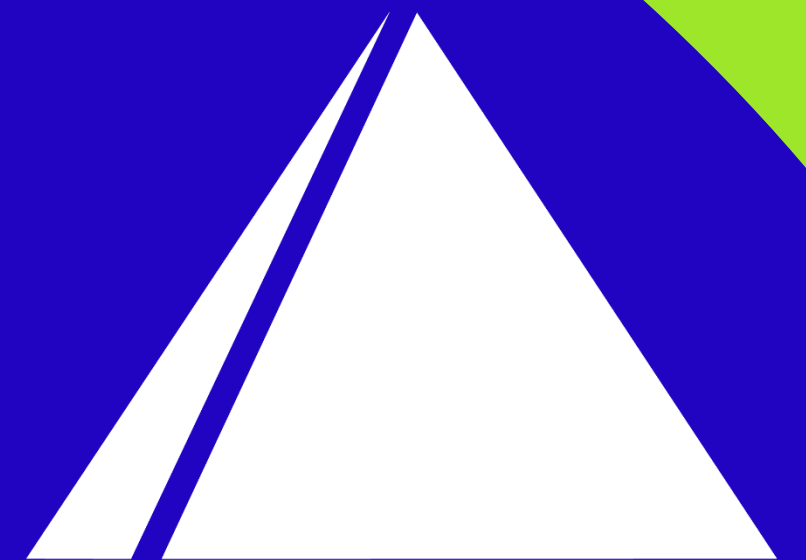


I. Take frequent breaks and don't over do it!



*From All of us at
St Marys Cement*

*Happy Holidays
and a
Wonderful New Year
to you and your Families*



st marys