

Votorantim Cimentos North America

St Marys Cement

Community Liaison Committee

December 6th, 2019

 **Votorantim**
Cimentos

 **St Marys Cement**



Agenda

- Welcome and Introductions
- Review of September 6th 2019 Meeting
- Complaints 2019 Year to Date
- Dust Complaints October 23rd to 25th
- Noise Complaints and Abatement
- MECP Update on Mobile and Permanent Monitoring
- Pond Technologies
- Stack Extension
- Questions Brought Forward in Advance of Today's Meeting
- Round Table
- Closing Remarks

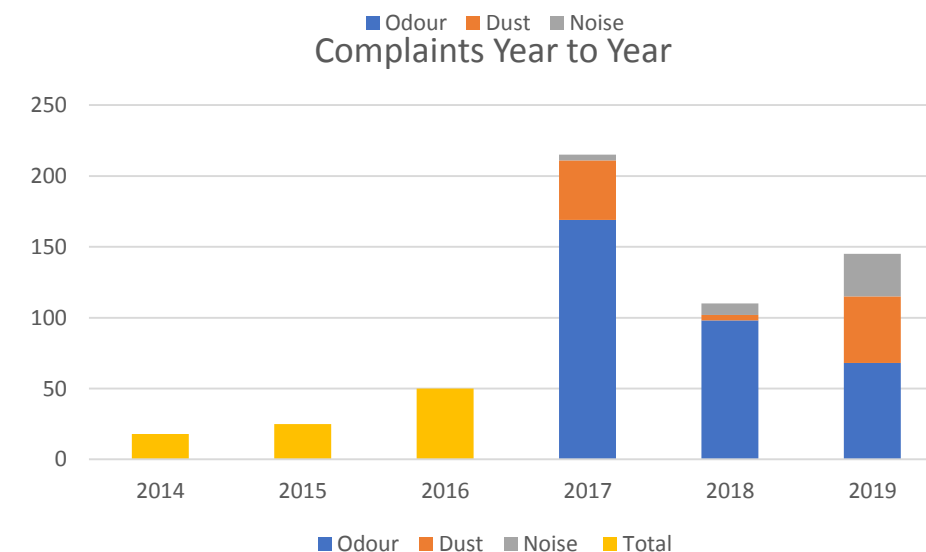
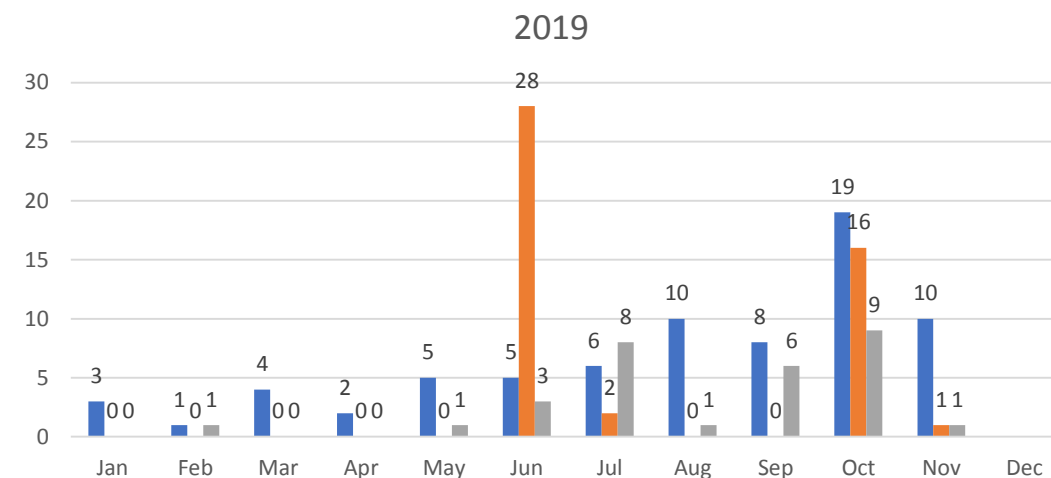
Review of September 6th Meeting

- Copy of September 6th CLC Meeting Minutes
- Copy of December 6th CLC Meeting Presentation
- Copy of the MECP 2017-2018 Ministry Ambient Air Monitoring

Complaints 2019 Year to Date

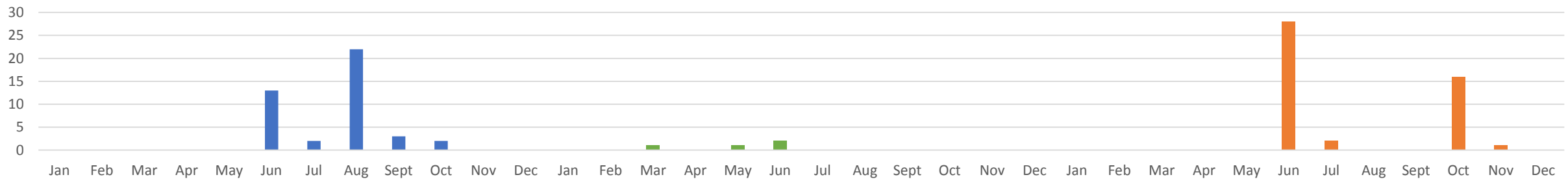
Complaints 2019 Year to Date

	Odour	Mention Health	Dust	Noise
Total	5	12	31	14
January	3	2	0	0
February	1	0	0	1
March	4	1	0	0
April	2	2	0	0
May	5	4	0	1
June	5	5	28	3
July	6	3	2	8
August	9	6	0	1
September	8	8	0	6
October	19	18	16	9
November	10	8	1	1
December				



Responding to Community Dust Concerns

Dust Complaints 2017 to Present

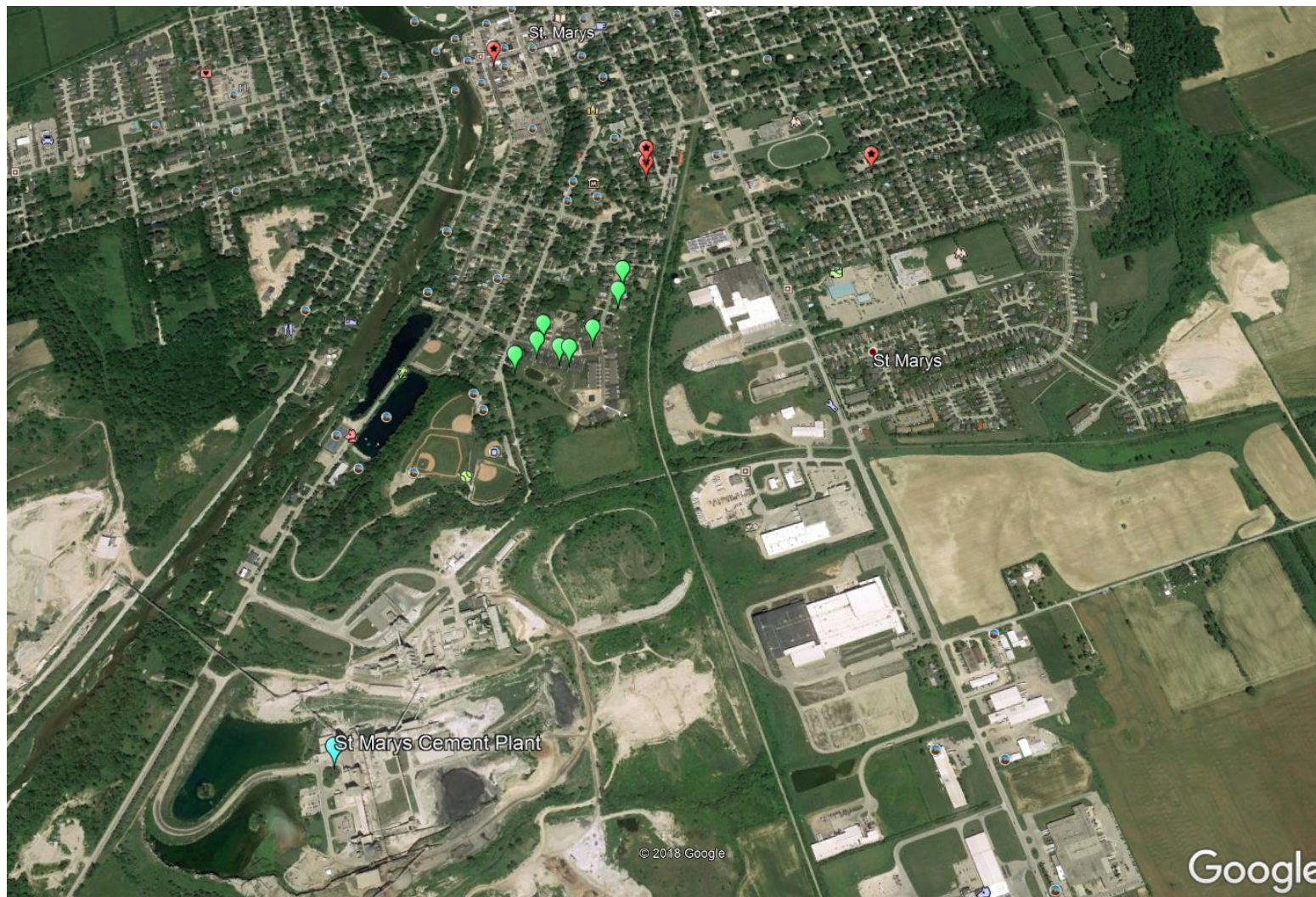


St Marys Cement: Procedure for Dust Concerns

1. SMC receives a dust concern from a resident via phone call or email.
2. SMC visits the location as soon as possible to take a dust sample.
3. The sample is taken using a piece of ash-less filter paper and deionized water.
 1. The sample is taken from the windshield of the vehicle or a glass panel on top. SMC does not take samples from the back, sides, or from the paint.
4. The sample is analyzed at the plant using fusion and X-Ray fluorescence. This is a process we use on site to analyze a wide range of raw materials and products.
5. SMC uses information provided by the resident (including time and place where the dust occurred, visual look, and feel) along with the analysis results to determine whether or not the material is one of the raw materials or products found at the site. SMC is aware that some of these materials come from other sources in town and will give the margin of error to residents.
6. If the material is found to have originated from SMC then further on site investigation and corrective actions are taken to prevent reoccurrence.

During the entire procedure SMC is conscious of other seasonal sources of dust which could have affected the sample results including traffic, farming, other industrial facilities, salt, fertilizer/manure, road cleaning, construction, road construction, pollen, etc.

Dust Complaints October 23 to 25th



Complaints either listed 'earlier in the week' or Wednesday night (October 23 to 24)

- **Weather**
 - Wind from the WSW – W
- **Analysis**
 - 13 samples were taken from vehicles
 - Samples had varying consistency
 - 5 Samples did not indicate St Marys Cement
 - 3 samples appeared as wet paper
 - 1 sample appeared as road dust
 - 1 vehicle appeared splattered on
 - 8 samples indicated St Marys Cement products
- **Cause**
 - Material transfer point at the cement loading area
- **Preventative Action**
 - Modifications to the transfer point

Noise Complaints

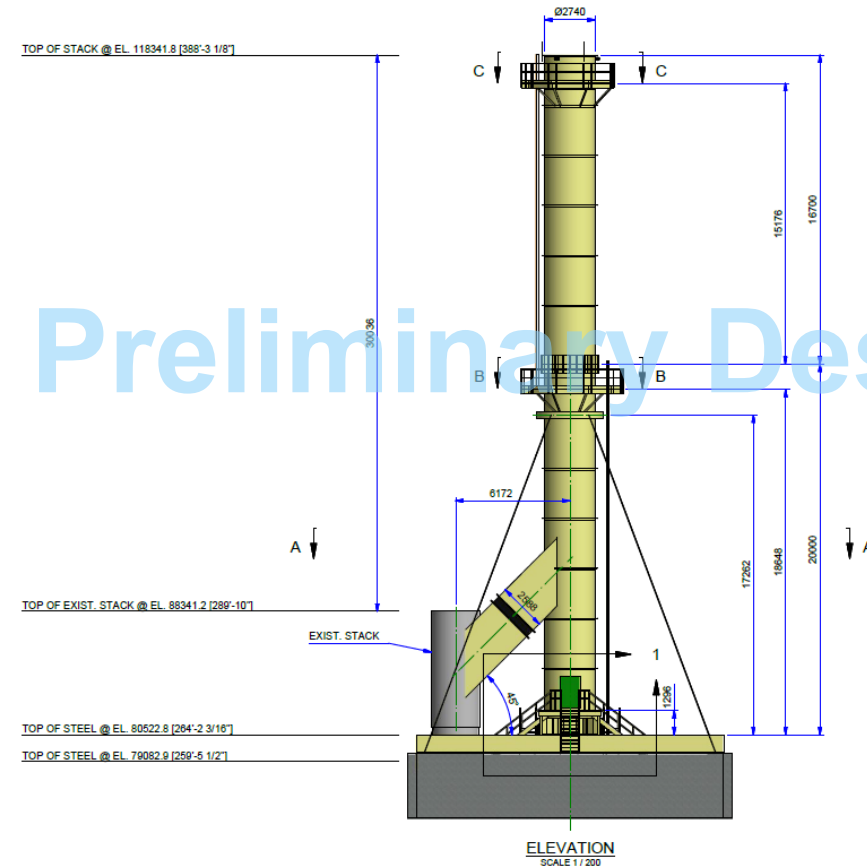
- Refer to Presentation from HGC Engineering at the September 6th CLC meeting: Acoustic Assessment and Noise Abatement Action Plan for St. Marys Cement
- St Marys Cement has received an increase in noise complaints over the last few months from a newly developed area north of the plant
- St Marys Cement has done additional monitoring with HGC Engineering both on site and offsite specific to the area of noise concerns
- The first finding is that noise levels being emitted from the various noise sources on site are the same or lower than the levels recorded in 2011.
 - Phase 1 of the Noise Abatement Plan was completed in August 2019.
- HGC Engineering noted that while taking readings near the complaint location it was “not possible to obtain a measurement representative of St Marys plant, because noise from other industrial facilities in the area was interfering. In particular, a sound with a distinct ‘tonal’ character was audible. This sound appeared to be originating from sources other than St. Marys Plant”.
- HGC Engineering was also able to detect the tonal signal of St Marys Cement but at a lower level than the other source.
- The initial reading was done for a small span of time so SMC has done additional testing at the location and is waiting for the final report which will indicate noise levels and tonal signal at the location.

MECP Update on Monitoring

Pond Technologies

<https://www.youtube.com/watch?v=l2FhmB7lqgo>

Stack Extension – Preliminary Design



Questions Brought Forward in Advance

1. Why has there been a huge increase in Cement Plant odour over the past few months?
 - SMC has previously discussed that the odour is caused by the limestone used in the process and variations in the limestone cause variations in the odour. We also have discussed the weather conditions that lead to decreased dispersion.
 - The number of odour complaints received by St Marys Cement YTD is lower than the number of complaints received in previous years.
2. When is the construction of raised stack to start?
 - April 2020.
3. Will the plant be shutdown at the time of the project (stack being raised) and for how long?
 - Yes, we have a shutdown scheduled for April 2020 for maintenance reasons and the stack extension will coincide. This project will take several months to complete but the shutdown in April is approximately 2 weeks.
4. Has there been anymore talk of alternative fuel being used? Or better filtration?
 - As discussed at the September 6th CLC meeting - the permitting process to use any alternative fuels including plastics or wood waste has been started and can take up to 3 years for approval.
 - Filtration of dust occurs in the main baghouse, filtration of emissions happens within the kiln itself due to the counter-flow of flame to the materials. This process does not change.
5. Has SMC been testing out burning plastics? There was a new plastic burning odour the other day.
 - No. SMC is not currently permitted to burn plastics or any other alternative fuels. If we did it would violate our current Air Permit which was issued by the MECP.
6. What is City Council doing to improve our air quality in St Marys?
 - Jim Craigmile

Questions Brought Forward in Advance

I would like to know why the Ministry of the Environment aren't tasked to monitor the noise, dust, smoke (in general the pollution) that is being emitted from the industries in and around St Marys, specifically St Marys Cement, Sure Gain, Cascade to name a few. I commend St Marys Cement for responding to complaints and investigating and providing responses to those complaints. It was my impression the MOE should be looking out for the best interest of the public/community not the industry that is potentially responsible for the complaint. ie: the fox guarding the hen house.

Measuring the pollution was done at one specific location, the St Marys Fire House on James Street. How can the results of the monitoring be taken seriously when the Fire Station is at a distance of at least one kilometre from the St Marys Cement. The results were dependant on the wind direction, atmospheric conditions etc... I believe the results of the testing/monitoring proves this. When the MOE does the emissions testing for automobiles it is done from the tail pipe of the vehicle, not at a distance. Pollution is pollution regardless to whom it may affect at any one moment in time.

Many times the pollution appears to occurs at night, over the weekend, holidays and in inclement weather. This seems very convenient that less people are around to complain and the MOE doesn't have the staff available to observe the complaint while it's happening.

Thanks

Round Table

Kara Terpstra – Environmental Coordinator
at 519-284-1020 x 235
or at
kara.terpstra@vcimentos.com

WINTER SAFETY TIPS

Icy conditions and unpredictable weather can cause some unique challenges. Runnymede's Occupational Therapists have offered these tips to help you navigate a winter wonderland.

TIP #1

Let someone know when you are going out, where you are going and when you expect to return.

TIP #2

Don't walk on icy or snowy sidewalks. Look for sidewalks that are dry and have been cleared.

TIP #3

Wear boots with non-skid soles or purchase snow grabbers that can fit over any pair of shoes.

TIP #4

If you use a cane replace the rubber tip before it's worn smooth. Need extra grip? Purchase an ice pick attachment for your cane at a medical supply store.

TIP #5

Prepare an emergency kit that includes a flashlight, batteries, canned food to last a few days, and warm blankets in case of a power outage.

TIP #6

Avoid leaving the house in bad weather, if possible. Don't be afraid to ask if doctors or therapists can come to you, and take advantage of grocery delivery services when available.



Closing Remarks

Kara Terpstra – Environmental Coordinator
at 519-284-1020 x 235

or at

kara.terpstra@vcimentos.com

