

# St Marys Cement Community Relations Committee

## Meeting Minutes

Tuesday June 6<sup>th</sup>, 2017

6:00 p.m. – St Marys Cement, Bowmanville Plant

**Attendees:** Amy Burke, *Senior Planner, Municipality of Clarington*  
Andres Ortega, *Representative, People & Management, St Marys Cement*  
Cherisse Diaram, *Quarry EIT, St Marys Cement*  
Chris Richards, *Environmental Manager, St Marys Cement*  
David Veenstra, *Port Darlington Community Association*  
Ernie Hamilton, *Quarry Manager, St Marys Cement*  
Jim Storey, *Operations Manager, St Marys Cement*  
Rick Rossi, *Port Darlington Community Association*  
Ruben Plaza, *Environmental Manager, St Marys Cement*  
Sophia Wouters, *Port Darlington Community Association*  
Tanya Pardy, *Human Resources Manager, St Marys Cement*  
Willie Woo, *Municipality of Clarington Council*

**Guests:** Saad Sarfraz, *Summer Student, St Marys Cement*

---

**Regrets:** Jim Grimley, *Wilmot Creek Homeowners Association*

---

### 1. Discussion re: Selecting new members and discussion of shoreline/flooding

- It was clarified with community members as to the request by St Marys regarding the new CRC member. Community believes that St Marys should not be able to decline a new member to the committee, and that discussion should be allowed to continue even if the member chosen was involved with legal action against St Marys
- Community members wanted to discuss shoreline erosion – St Marys declined due to legal proceedings regarding shoreline/flooding cannot be discussed on advice of legal counsel. Community members mentioned that this issue has been raised previously at meetings and , it was raised once and Ruben Plaza presented on the topic.
- Comment: erosion and flooding occurring all over Lake Ontario shoreline due to record rainfall
- Question: if legal action is withdrawn or ended, could a discussion happen at that point?
- Comment: members need to have responses to these questions in order to respond to community concerns

### 2. Agenda adopted

- moved by Amy Burke
- seconded by Chris Richards

### 3. Minutes from last meeting approved

- Final draft of minutes to be forwarded by Tanya as well as November minutes
- Final draft of annual report will be forwarded by Tanya

Discussed electing Co-Chair community participants were not prepared to do so at this time.

### 4. Review of Community Concerns

- In the 2nd quarter of 2017 we have received 4 community complaints:
  - 1 – Noise
  - 2 – Flooding
  - 1 – Odour
- April 14<sup>th</sup>: complaint about noise around midnight
  - Quarry equipment was not operating at that time
  - Shift supervisor went to Cedar Crest gate to investigate but could not identify noise or source
  - Noises heard previously while dock conveyor was running
- April 28<sup>th</sup>: complaint about pumping into marsh and pumping into lake causing flooding and request to stop pumping
  - Water is not pumped into the marsh
  - Water is discharged to a creek between the quarry and plant which leads to the lake
- May 23<sup>rd</sup>: complaint to MNRF (Ministry of Natural Resources and Forestry) regarding possible effects of blasting and saturated soil conditions
  - Report requested from 3<sup>rd</sup> party monitoring firm and from blasting contractor consultant
  - Reports found that blasting would not cause liquefaction
  - Response sent to MNRF inspector
  - No direct communication was made to complainant as the complaint went through the MNRF
- June 1<sup>st</sup>: odour following blast
  - Couldn't describe odour
  - Community members have described an odour, something like gunpowder (not called in as complaints)
- Complaints sometimes stem from deviating from Tuesday/Thursday blast schedule due to unfavourable weather conditions on Tuesday or Thursday
- Comment: communication by community members to community
  - Aiming to manage risk of being perceived as spokespeople for St Marys Cement Request that all information be posted by St Marys Cement so that it is not perceived as coming from CRC community association representative
  - Community representatives on CRC are liaisons to their associations
  - Sometimes can act as point for gathering questions/concerns but not always

- Maybe encourage community members to voice concerns directly so they can receive a direct response
  1. Complaints reported to MNRF/MOECC etc can't be reviewed with the complainant unless he/she authorizes the MNRF?MOECC
- Request that alert sent out when blast dates change (maybe through community association email chain)
- Suggestion to include information about blasting times/restrictions on website – this is currently done

**5. Environmental Results**

- The PM10 monitoring station and dust fall sampler locations were reviewed and are as follows:



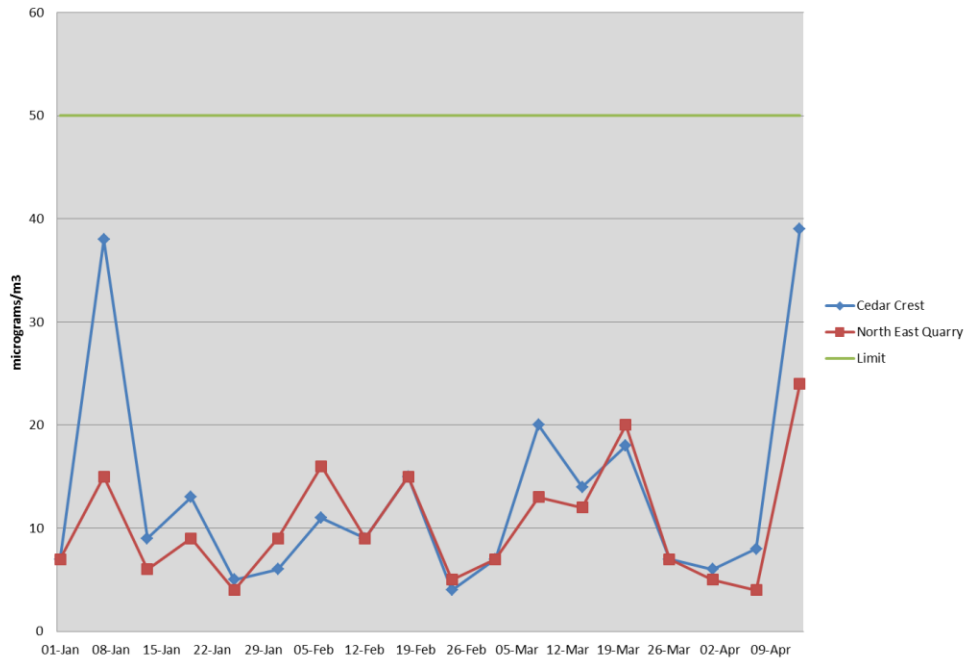
Sample Station	Location	Monitor
SMC1	OPG	PM 10 BAM ,Dust fall Jar
A	Hutton Transport	PM 10 Hi Vol, Dust Fall
B	Cedar Crest	PM 10 Hi Vol Dust Fall
C	Cedar Crest (MOECC location)	Dust Fall Jar
SMC2	Cove Road	PM 10 BAM , Dust Fall Jar

- Dust fall jars take a sample during 30 days, PM 10 BAM monitors take an hour sample and PM 10 hi-vol monitors take a sample for 24H periods every 6 days
  -
- No exceedances from r Dust Fall samplers or PM 10 hi-vol / BAM monitors were recorded since the last meeting:

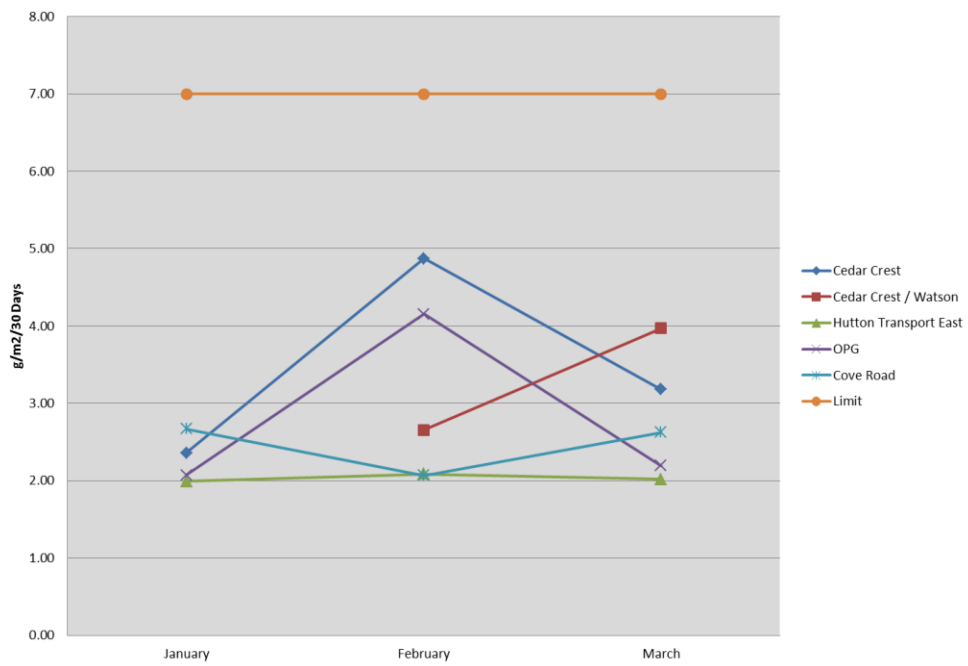
Needs title of PM 10 Hi Vol

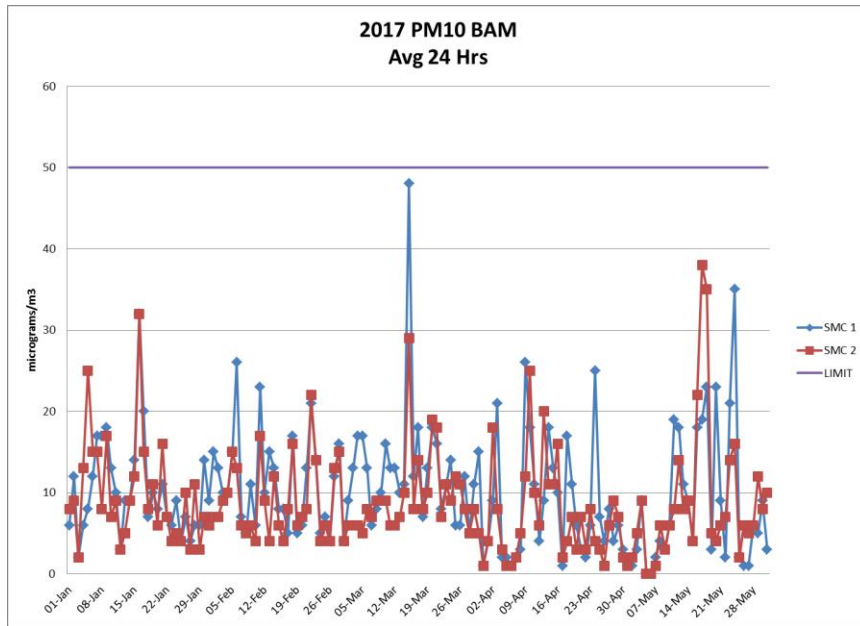
I would put first the graph of dust fall jar then the hi vol and then the BAM

### PM 10 Program 2017



### Dustfall 2017



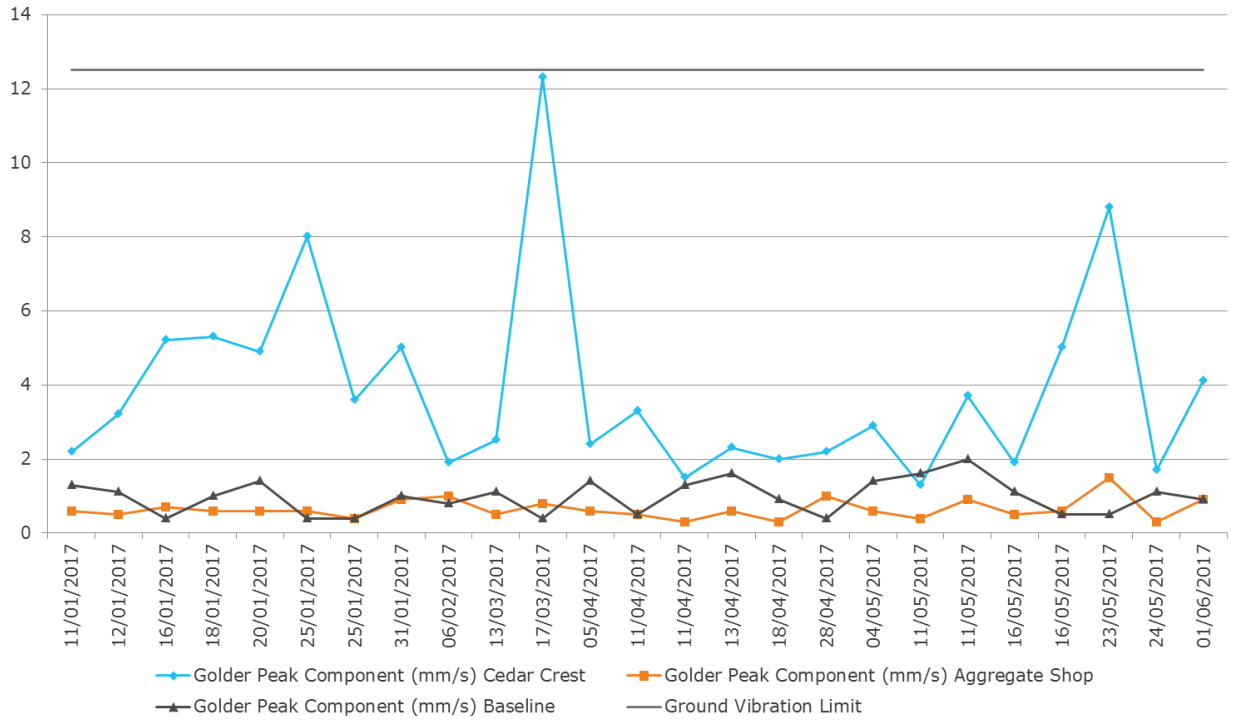


- SO<sub>2</sub> and NO<sub>x</sub> Emissions
  - SO<sub>2</sub> emissions for 2017 to May 31<sup>st</sup> are 1,219 tonnes; the total allowance for 2017 is 3684 tonnes.
  - NO<sub>x</sub> emissions for 2017 to May 31<sup>st</sup> are 1,127 tonnes; the total allowance for 2017 is 3,349 tonnes.
  - 1. Ammonia injection is used to control NO<sub>x</sub>
    2. Hydrated lime and lime hydrator control SO<sub>2</sub>
  - Suggestion to include target to date in addition in charts

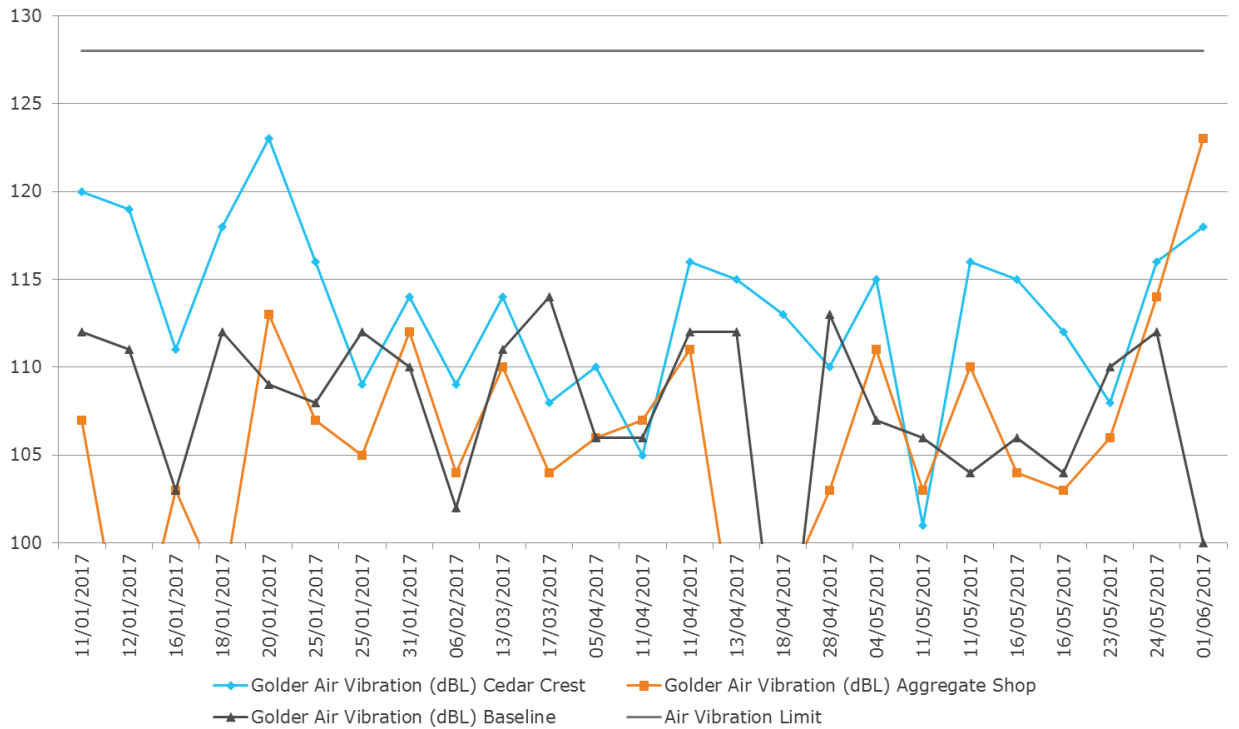
## 6. Quarry Operation

- Producing 1,4 and 5
- No ground or air vibration exceedances in start of 2017
  - High vibration value in March did not result in complaints
  - Reduced hole size/number of holes
- Overburden stripping and stockpiling and screening ongoing
  - Berm construction to continue along east side of property
  - Clay being hauled as part of Port Hope Area Initiative, TBD
- Concern that vibration at houses is higher than at monitor due to location of monitor
  - Previously investigated moving the monitor to municipal lot on Cedar Crest Beach Road (east of current monitor location)
  - Monitor installed at that location recorded similar values to permanent monitor
  - Location will have to be re-examined in the future

### Peak Ground Vibration Level (mm/s)



### Peak Air Vibration Level (dB)



## **7. Community Outreach**

- University of Toronto engineering class
- Hosted Grade 12 High School Chemistry Class for the day
- Visited local Grade 4 class to assist with request for speaker on mining and minerals for class project
- Participated in local kindergarten class Mighty Machine event
- Participated in Durham College's Brewing Memories 50th anniversary tour
- Support to Hospital Foundation fundraiser
- Support to Bethesda House fundraiser
- Donation to Big Brothers & Big Sisters
- Ganaraska Forest Centre Conservation
- Durham Region Envirothon - competition for students
- Mayor's Gala – For The Love of Art
- Autism Home Base Durham – Sunday Cinema Fundraiser
- Durham Music Camp
- Clarington Fire Fighters – Fundraiser for Camp Bucko
- Concerts in the Park
- Doors Open Clarington
- Their Opportunity – provides sports equipment for children in need
- Donation of Gas Powered Water Pumps to the Clarington Fire Department
  - Also, donation of sand, both used to tackle flooding

## **8. Overflow channel**

- Runs adjacent to property along former Waverly Road, part of which is within West Side Marsh and part of which is within St Marys Cement property
- Clearing of this channel was requested by community members and CLOCA approved
- Contractor was hired to clear channel several times at start of May, as sediments from lake close channel within hours-days of clearing
- No routine for clearing this channel, though if slump/other major issue, it would be addressed
  - No instances of water in this channel before

## **9. Dock Operations**

- No major work at dock – salt being shipped in
- Coal is brought in as needed, possible shipment in July
  - Stockpiling occurs in fall/early winter in preparation for closure of shipping routes
- Shipping restrictions on St Lawrence won't affect operations

#### **10. Projects Update**

- Alternative fuels – wood planned to be used around September (once system is completed)
- Alternative fuels – plastics trial to be done later

#### **11. CBM Underground Aggregate Mine Update**

- Public meeting occurred last week, no new updates since that date

#### **12. 2017 CRC Meetings**

- Council meeting on Monday June 12<sup>th</sup>, CRC members welcome to attend/discuss
- Co-chair will be selected by community representatives and communicated to Tanya by June 12<sup>th</sup>
- Will schedule blast visit/tour for CRC members during nicer weather
- Next meeting will Tuesday September 5<sup>th</sup>, 2017