

St Marys Cement Community Relations Committee

Meeting Minutes

Tuesday November 29th, 2016

6:00 p.m. – St Marys Cement, Bowmanville Plant

Attendees: Amy Burke, *Senior Planner, Municipality of Clarington*
Andres Ortega, *People & Management Representative, St Marys Cement*
Cherisse Diaram, *Quarry Engineer, St Marys Cement*
Chris Richards, *Environmental Manager, St Marys Cement*
David Hanratty, *Director of Land and Resources, CBM Aggregates*
Ernie Hamilton, *Quarry Manager, St Marys Cement*
Glenda Gies, *Port Darlington Community Association*
Jim Grimley, *Wilmot Creek Homeowners Association*
Jim Storey, *Operations Manager, St Marys Cement*
Rick Rossi, *Port Darlington Community Association*
Ruben Plaza, *Environmental Manager, St Marys Cement*
Tanya Pardy, *Human Resources Manager, St Marys Cement*
Willie Woo, *Municipality of Clarington Council*

Guests: Alyson Beal, *Golder Associates*
Jamie Davidson, *CLOCA*
Mike Lebreton, *Lands Manager, CBM Aggregates*

Regrets:

1. Agenda adopted

- Request to move CLOCA presentation to start of meeting
- moved by Tanya Pardy
- seconded by Amy Burke

2. Minutes from last meeting approved

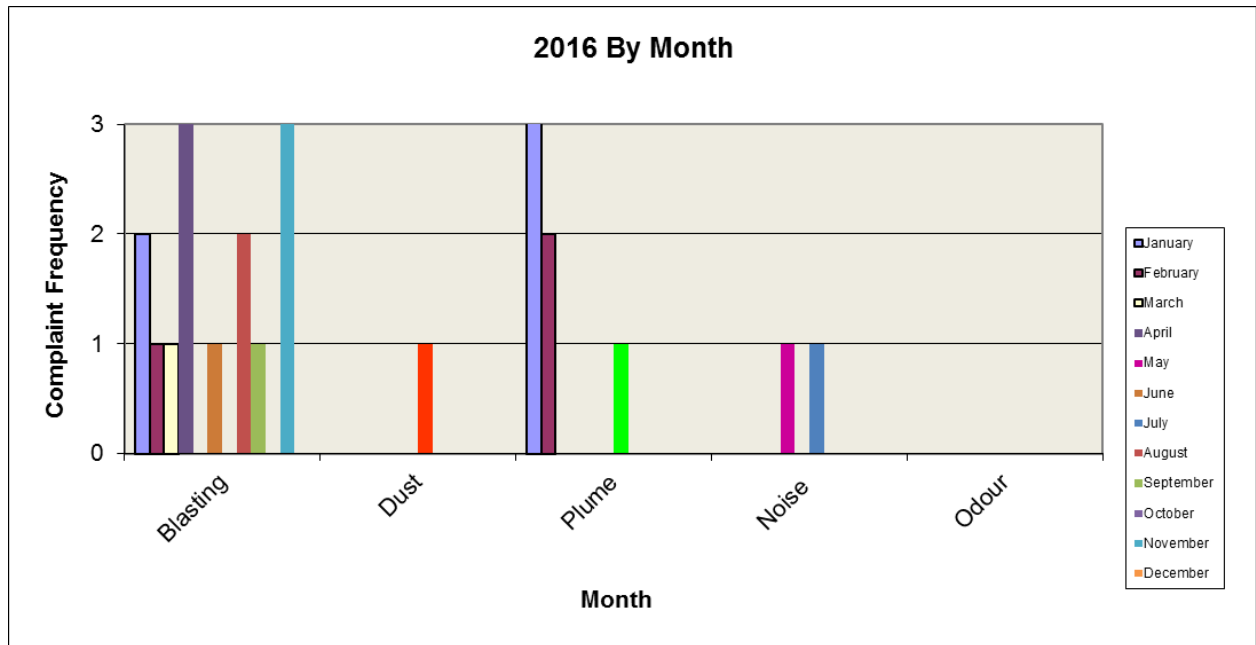
- moved by Glenda Gies
- seconded by Amy Burke

3. West Side Marsh

- Presentation by Jamie Davidson of CLOCA
- West Side Marsh Area was originally owned by St Marys Cement and was transferred to CLOCA through a tri-party arrangement predicated on the Municipality of Clarington transferring the southern portion of Waverley Road to St Marys Cement.
- Enhancements to promote nesting of birds, fish, wildlife and overall quality of marsh

- Performance of marsh monitored, as part of larger program covering several marshes in Durham Region

4. Review of Community Concerns



- In the 4th quarter St. Marys received 4 complaints.
 - 1 blast complaint from resident of Bowmanville on Sept 13th
 1. Resident unhappy with blast and wanted to bring it to St. Marys attention
 2. Declined meeting
 - 2 blast complaints received by the Municipality on Nov 25th
 1. Noise from both blasts
 2. In process of following up
 - 1 blast complaint from individual at Municipal Town Hall regarding blast on Nov 25th
 1. In process of following up
- The total number of complaints for 2016 is 26.
 - 14 were with respect to Blasting
 - 1 was with respect to Dust
 - 9 were with respect to Plume
 - 2 were with respect to Noise
 - 0 were with respect to Odour
- The Municipality is reviewing its procedures for the receipt of questions and concerns regarding St Marys Cement operations from members of the public and transmittal of these to the Company.
- Follow up with weekly newspaper notification revealed that an older version of the blasting schedule notice is being used. It was requested that the current version be utilized.



5. Environmental Results

- a) The PM10 monitoring station and dust fall sampler locations were reviewed and are as follows:

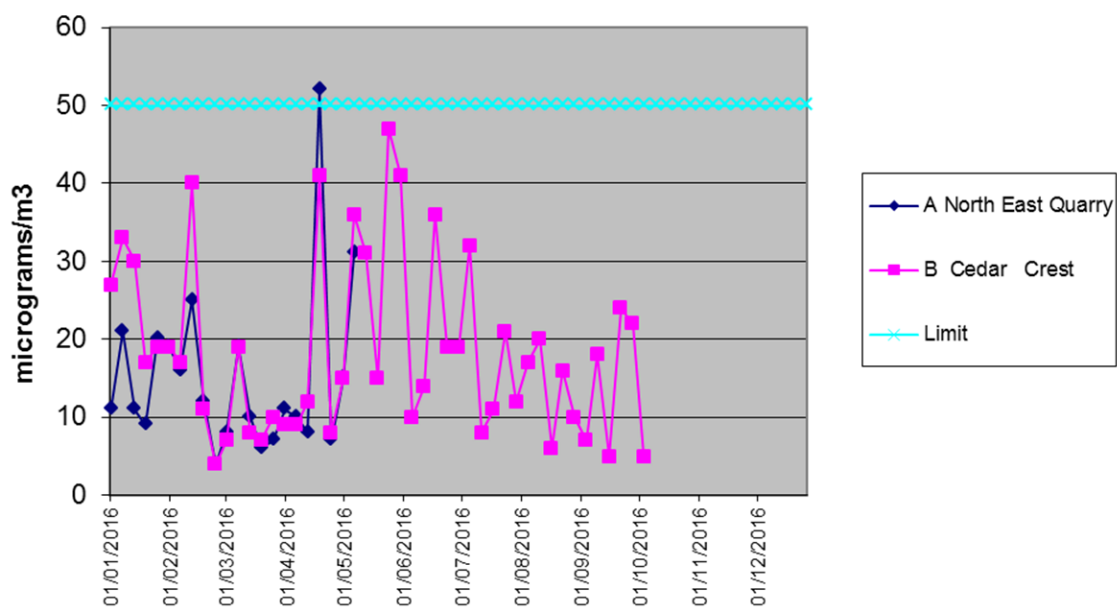


Sample Station	Location	Monitor
SMC1	OPG	PM 10 BAM ,Dust fall Jar
A	Hutton Transport	PM 10 Hi Vol, Dust Fall
B	Cedar Crest	PM 10 Hi Vol Dust Fall
C	Cedar Crest (MOE location)	Dust Fall Jar
SMC2	Cove Road	PM 10 BAM , Dust Fall Jar

- b) No exceedances from PM10 or Dust Fall samplers or BAM monitors were recorded since the last meeting:

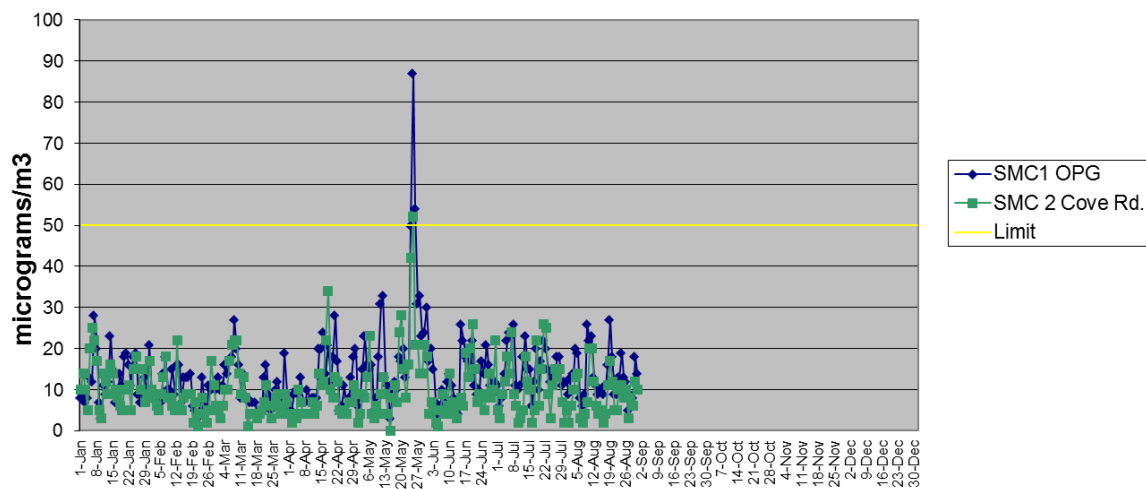
- Sampler Location A:
 - After consultation with the Ministry of Environment and Climate Change, this location has been temporarily removed and will be replaced after berm construction and seeding has been completed, likely in the late fall of 2016.

PM 10 Program 2016

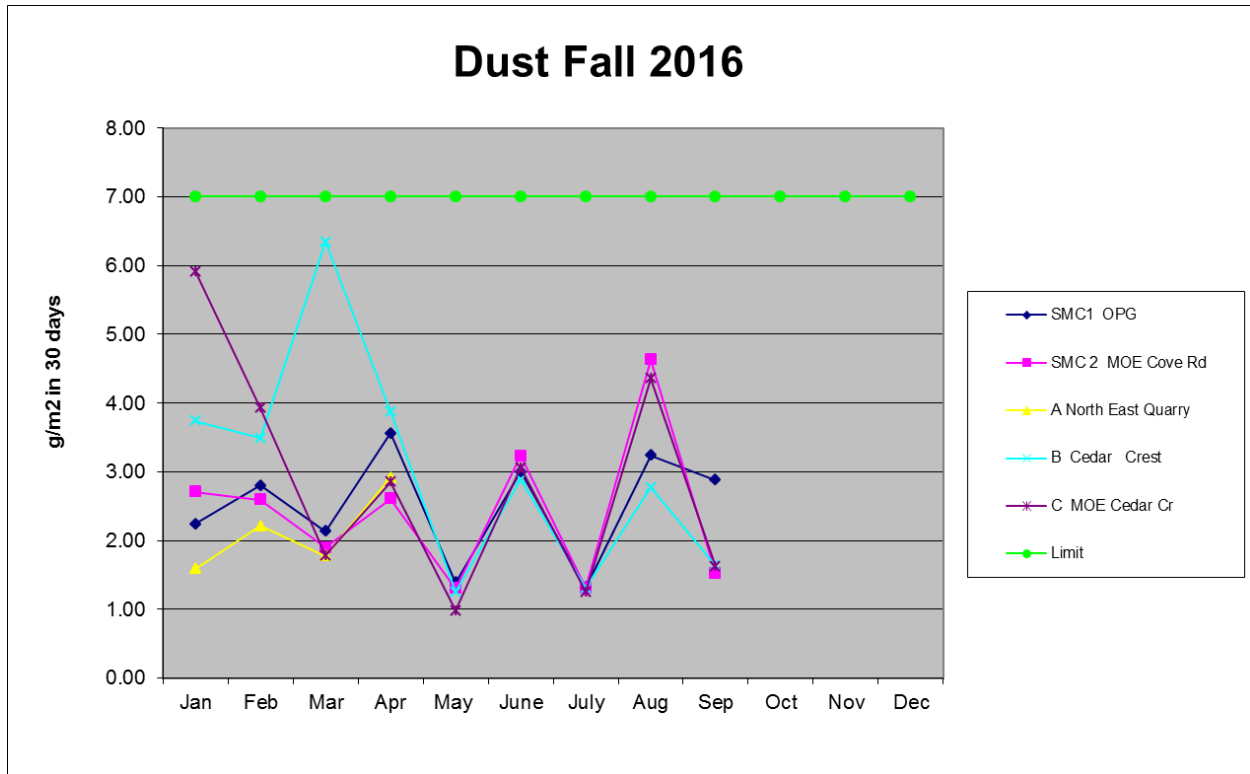


- SMC 1 and SMC2:

2016 PM 10 BAM Avg 24 hrs.



- No Dust Fall Exceedences were recorded in the first three quarters of 2016



SO₂ and NO_x Emissions

- SO₂ emissions for 2016 to October 31st are 4,431 tonnes; the total allowance for 2016 is 3,511 tonnes.
- NO_x emissions for 2016 to "October 31st" are 2,596 tonnes; the total allowance for 2016 is 3,192 tonnes.
- SO₂ emissions are higher than previous years due to the raw materials being used (largely the input of limestone from the quarry with higher sulphur content)
- Ways to reduce this are being investigated, with support from upper management team
- Lime hydrator technology performing fairly well but there are still improvements needed, as this is a new technology
- Additional measures being investigated but this will take many years to design, permit, get capital approval, and construct

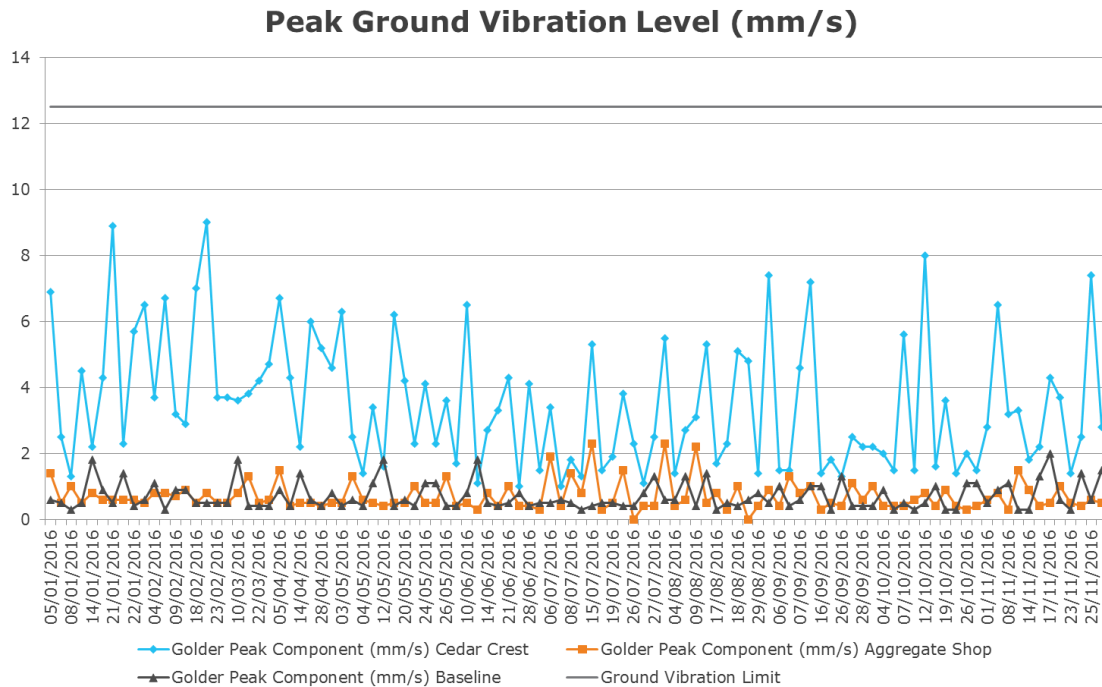
6. Dock Operation Practices

- Controls in place to reduce dust generated from dock operations
 - Petcoke piles are covered in tarps and dust suppressant is applied on open faces
 - Coal piles are not covered in tarps due to the risk of self-ignition; instead, dust suppressant is applied on the piles – most piles are coal piles presently
 - Maximum height of fuel piles is 10m
 - Boat unloading Operations stop when wind speeds exceed 40km/h and are in direction of concern

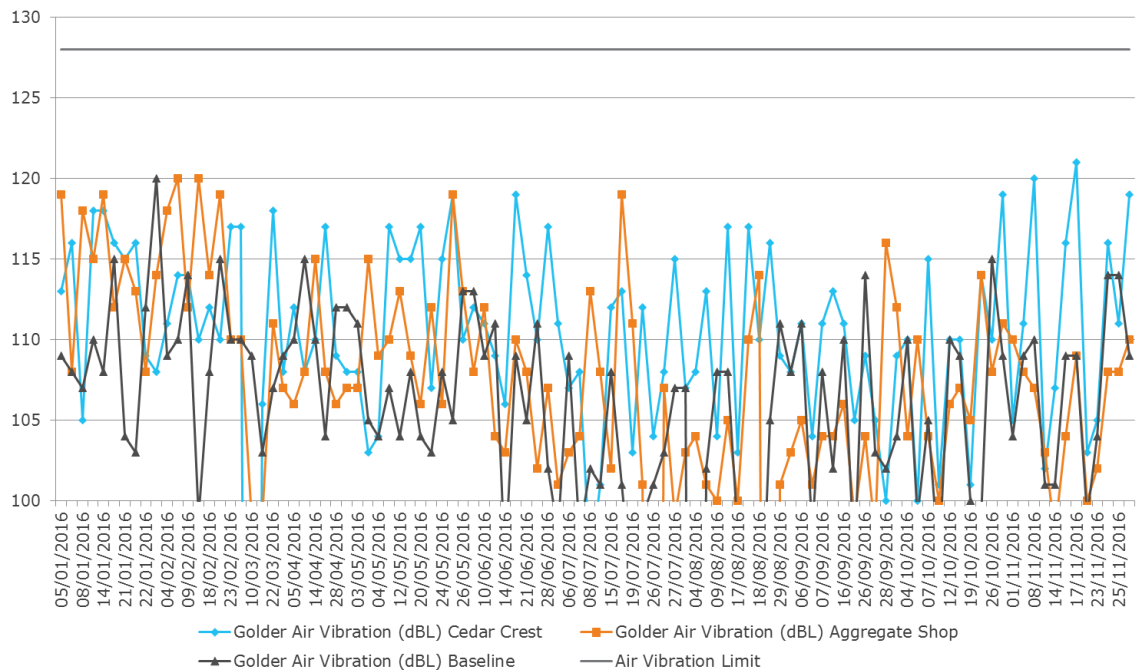
➤ Backup alarms on all equipment consistently on site

7. Quarry Operation

- Extracting levels 1,2,5 presently, to return to 2,3 and 5 soon
- No ground or air vibration exceedances to date in 2016
- Overburden stripping and stockpiling completed for 2016, will resume spring 2017
 - Berm construction along east side of property, to be seeded in December
 - Clay hauled to Port Hope Area Initiative projects, will continue 2017



Peak Air Vibration Level (dB)



8. Community Outreach

- Take Our Kids to Work Day
 - Hosted 8 children of employees and 20 students from local high school
 - Participated in hands on activities and presentations
 - Visited quarry for a blast
- LAV Monument
 - The plant contributed the concrete pad for the Highway of Heroes Light Armoured Vehicle (LAV) III Monument Program in the Bowmanville Community
 - <http://lavmonument.ca/en/index.html>



9. Traffic South on Waverly Road

- St Marys Cement continues to be concerned about the amount of traffic travelling past Energy drive to their site. This results in U-turns and stops at the south end of Waverley

Road at the site entrance, which creates potential hazards for trucks accessing/exiting St Marys property.

- The Municipality has agreed to re-examine the issue in consultation with St Marys Cement. An on-site meeting will be coordinated.

10. Open House

- Will be held in 2018
- Grew very large in 2015 (>4000 people)
- Developing location for the event (Hutton Transport facility has been removed)
- Will be communicated in letters, mailing list, website

11. Website

- Preliminary design being done by consultant through Votorantim website
- Will include blasting information and contact information as well as links to CRC minutes
- Link will be communicated to CRC committee when the website is live
- Feedback welcome, especially at early stages

12. Alternative Fuels

- Permits available but still working on sourcing material

13. Mining under the lake

- Initiative by CBM Aggregates (a division owned by Votorantim Cimentos North America, as is St Marys Cement)
- First Environmental Assessment (EA) Open house for the project is being held on Monday December 5th
- Exploratory drill holes done from dock, adjacent to Lake Ontario, future drill holes may be done in the lake after the EA process
- Process of mining under lakes and underground is not new
 - E.g. Goderick Mine
 - examples will be discussed at open house
- Website: <http://bowmanvilleexpansion.ca/>

14. 2017 CRC Meetings

- Next meeting will be communicated in 2017 (Tuesday March 7th, 2017)