

St Marys Cement Community Relations Committee

Meeting Minutes

Tuesday June 7th, 2016

6:00 p.m. – St Marys Cement, Bowmanville Plant

Attendees: Amy Burke, *Senior Planner, Municipality of Clarington*
Cherisse Diaram, *Quarry Supervisor, St Marys Cement*
Chris Richards, *Environmental Manager, St Marys Cement*
David Veenstra, *Port Darlington Community Association*
Glenda Gies, *Port Darlington Community Association*
Jim Grimley, *Wilmot Creek Homeowners Association*
Jim Storey, *Operations Manager, St Marys Cement*
Martin Vroegh, *Director of Environmental Affairs, St Marys Cement*
Rick Rossi, *Port Darlington Community Association*
Ruben Plaza, *Environmental Manager, St Marys Cement*
Tanya Pardy, *Manager, People & Management, St Marys Cement*
Willie Woo, *Municipality of Clarington Council*

Regrets: Wilson Little, *Director Engineering, Lands & Environment, VCNA*

1. Agenda for December 9th, 2015 CRC meeting adopted

- adopted by Tanya Pardy
- seconded by Amy Burke

2. Minutes from December 9th, 2015 meeting approved

- moved by Tanya Pardy
- seconded by Amy Burke

3. Introductions

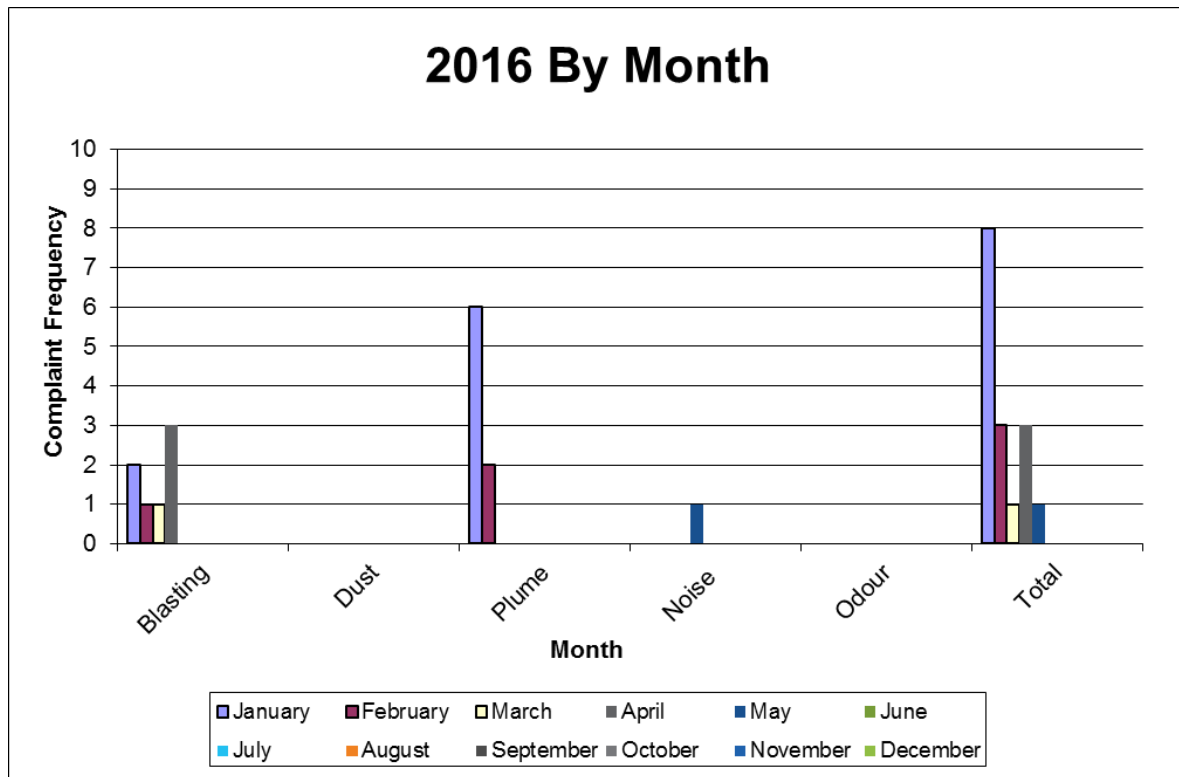
- New members: Chris Richards and Jim Grimley
- Visitor from Votorantim in Brazil

4. Outstanding Items

- Confirmation of the plastics source and allowable feed amounts
 - Prospective plastic sources, none confirmed
 - Permitted for 300 tpd of plastic, 100 tpd wood
 - Metering would be done by mass, not volume, likely pneumatically conveyed and record keeping will be important for tracking purposes
- What the 100 tonne/day maximum wood allowance represents of total daily amount of feedstock used at the plant

- This would be a total of a 4% thermal replacement of the fuels, which comprise roughly 6% of the total feed
- in comparison, limestone feed at roughly 10,000 tpd
- Clarification whether wood and plastics would be burned simultaneously during the trial
 - Not simultaneous during the trial but the intent is to eventually have both systems running together
 - Continuous emissions monitoring is in place, ambient conditions monitoring will also be used during the trial
- Algae project is going well at St Marys but no immediate plans to implement at Bowmanville

5. Review of Community Concerns



- In the 2nd quarter we have received 4 complaints. The total number of complaints for 2016 is 17.
 - 3 related to blasting
 - 1 related to noise
- St Marys Comments on Complaints
 - 1 blast complaint was followed up by visit at which several members of the CRC were present
 - 1 blast complaint was forwarded by municipality and followed up by emails and phone calls but it was not possible to arrange an appointment
 - 1 blast complaint
 1. 5th complaint from resident, no other complaints from that street

2. followed up with visit from MOE and Golder Associates
 3. Seismograph installed for blast, results within limits
 4. Second follow up with seismograph to be scheduled week of June 13th
- Noise complaint reported evening of Friday May 6th
 1. Sounded like a crusher running
 2. Investigated Cargo Dockers operation, quarry operation, CBM aggregates, and contractors as potential sources
 3. Could not identify source of noise
 - Possible complaint from resident of Wilmot Creek mentioned by Jim Grimley
 - Commented on blasting at a resident's meeting
 - Vibrations felt at night, date to be confirmed

6. Environmental Results

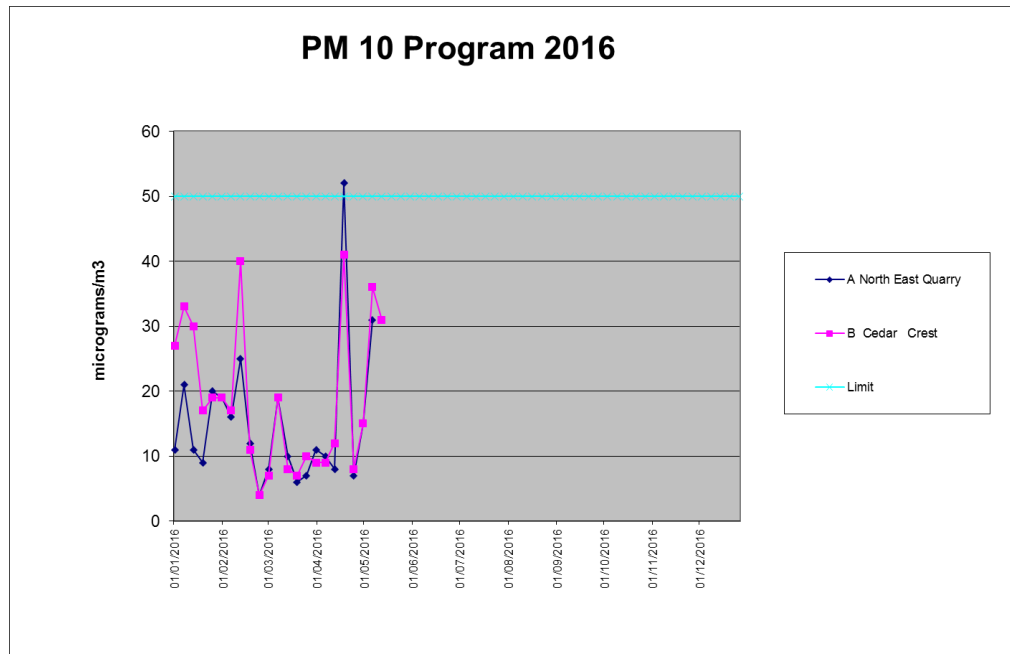
- a) The PM10 monitoring station and dust fall sampler locations were reviewed and are as follows:



Sample Station	Location	Monitor
SMC1	OPG	PM 10 BAM ,Dust fall Jar
A	Hutton Transport	PM 10 Hi Vol, Dust Fall
B	Cedar Crest	PM 10 Hi Vol Dust Fall
C	Cedar Crest (MOE location)	Dust Fall Jar
SMC2	Cove Road	PM 10 BAM , Dust Fall Jar

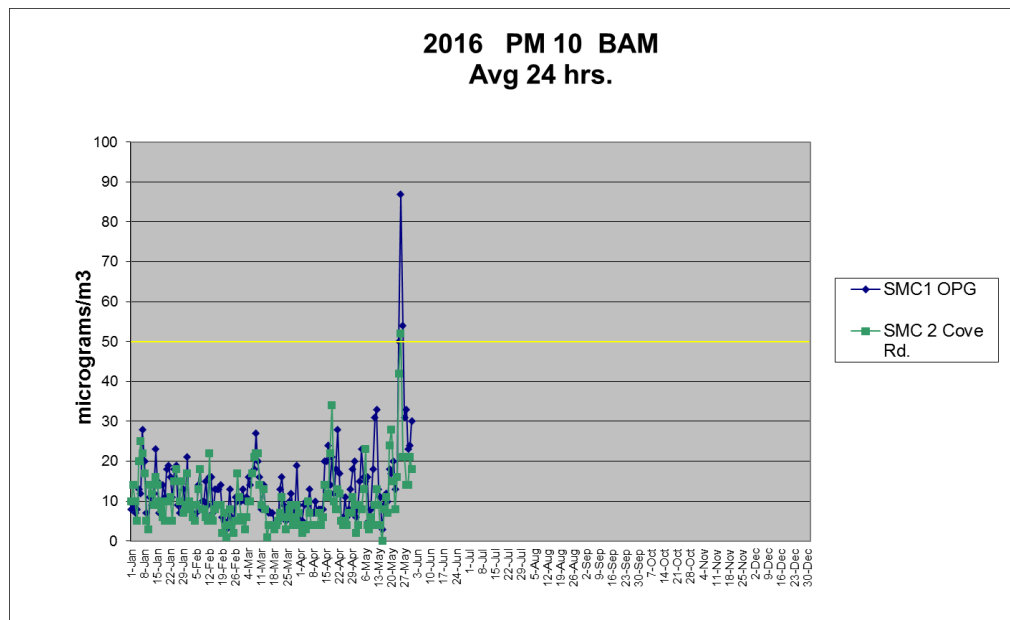
- b) Five exceedances from PM10 or Dust Fall samplers or BAM monitors recorded since last meeting:
- Sampler Location A:

- After consultation with the MOE, this location has been temporarily removed and will be replaced after berm construction and seeding has been completed, likely in the late fall of 2016.



Date	Site A North East Quarry. ($\mu\text{g}/\text{m}^3$)	Cause
April 18	52	Working close to the sampler building berm in Quarry

- SMC 1 and SMC2:

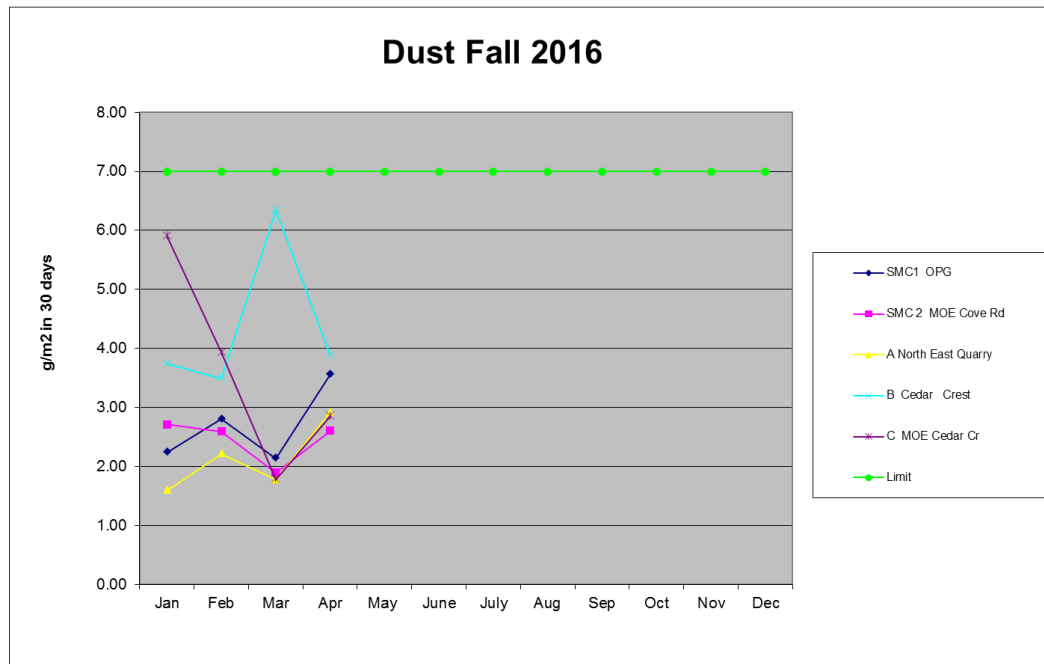


Date	SMC1 OPG ($\mu\text{g}/\text{m}^3$)	Cause
24-May-16	50	Agricultural activity
25-May-16	87	Agricultural activity and upwind elevated particulate values
26-May-16	54	Agricultural activity

Date	SMC2 Cove Rd. ($\mu\text{g}/\text{m}^3$)	Cause
25-May-16	52	Elevated particulate values upwind coming from outside the plant



- No Dust Fall Exceedences in 2016



c) Emissions

- SO₂ emissions for 2016 to May 31st are 2,049 tonnes; the total allowance for 2016 is 3,511 tonnes.
- NO_x emissions for 2016 to May 31st are 1,237 tonnes; the total allowance for 2016 is 3,192 tonnes.
- For SO₂ emissions, the allowances from the plant in St Marys, Ontario may be applied and additional allowances may be purchased - this is allowed as it is in the same "airshed"
- Emissions are still compliant with legislation for local emissions, allowances are part of a province wide emission reduction program
- Allowances may be bought and sold between different producers, however, St Marys is striving to reduce emissions through investment in new processes and equipment and has seen some success in using a new "lime hydrator" technology - the first of its kind in the industry - and is investigating other methods

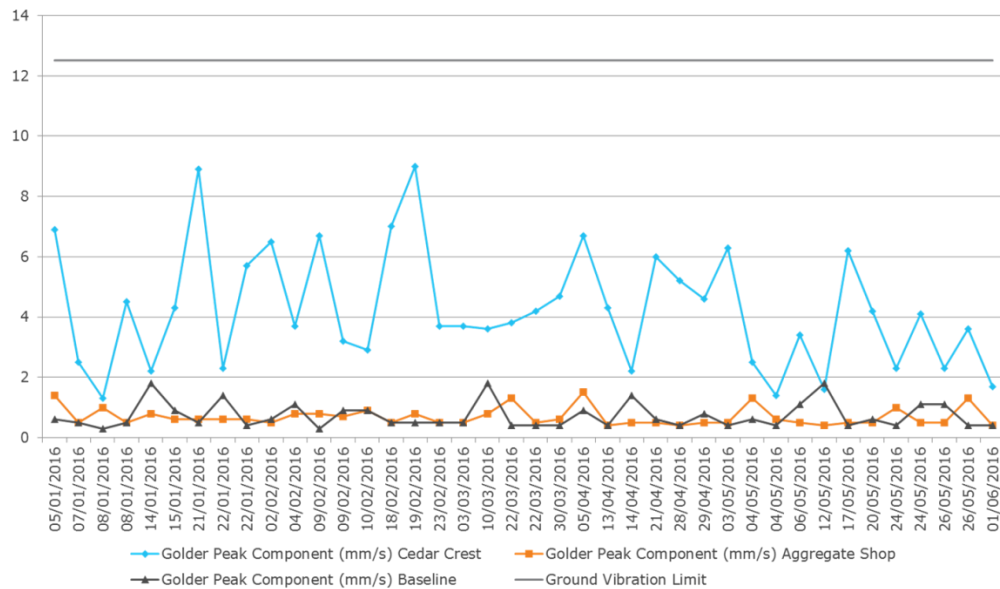
7. Dock Operation Practices

- Controls in place to reduce dust generated from dock operations
 - Petcoke piles are covered in tarps and dust suppressant is applied on open faces
 - Coal piles are not covered in tarps due to the risk of self-ignition; instead, dust suppressant is applied on the piles – most piles are coal piles presently
 - Maximum height of fuel piles is 10m
 - Boat unloading Operations stop when wind speeds exceed 40km/h and are in direction of concern
 - Backup alarms on all equipment consistently on site

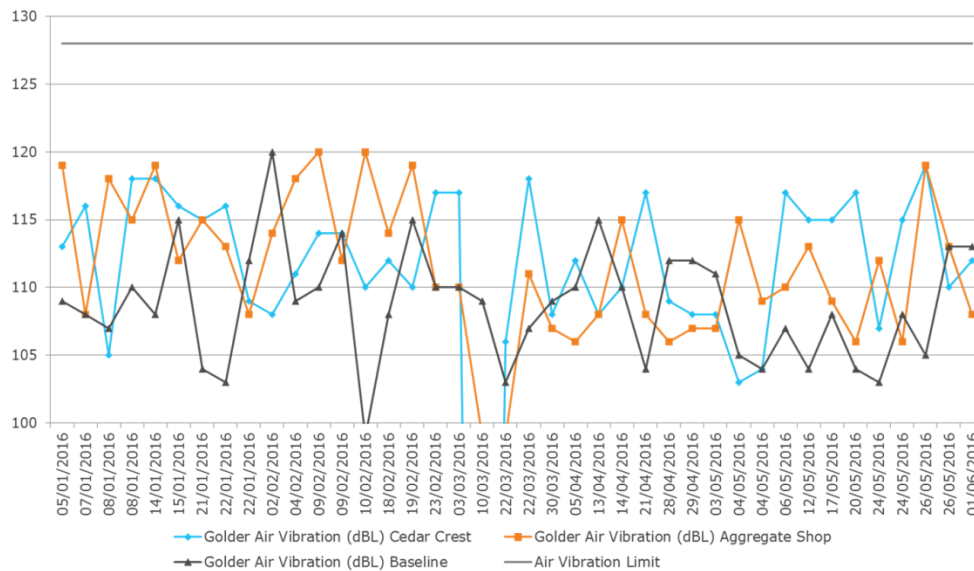
8. Quarry Operation

- Extracting levels 2, 3 and 5 presently, to switch to 1,4 and 5 soon
- No ground or air vibration exceedances in start of 2016
- Overburden stripping and stockpiling underway
 - Berm construction happening along east side of property
 - Clay to be hauled for the Port Hope Area Initiative New Port Granby Project Long-Term Waste Management Facility

Peak Ground Vibration Level (mm/s)



Peak Air Vibration Level (dB)



9. Perimeter Berm

- To be constructed along North/East portion of quarry boundary
- Maximum width allowed of 50m though the berm will be closer to 30m
- Portion of the berm may be reclaimed in the distant future

10. Community Outreach

- St Marys Cement in Bowmanville recently participated in the opening of a historic trail that leads to “Camp 30”, a former prisoner of war camp used during the Second World War. The location was designated a historic site in 2013.



- The plant will also be contributing to the Highway of Heroes Light Armoured Vehicle (LAV) III Monument Program in the Bowmanville Community
<http://lavmonument.ca/en/index.html>
- The Bowmanville Plant has also contributed to the following programs:
 - Construction of two new outdoor classrooms started – Dr. Ross Tilley and Central Public School
 - Ganaraska Forest Centre – Outdoor Education Program for Students
 - Their Opportunity Golf Tournament – Raises funds for Sports Equipment for Children that would otherwise not be able to participate in sports
 - Golf Tournament for Ovarian Cancer
 - Mayor’s Golf Classic to support the Bowmanville Museum
 - Support to Clarington Fire Fighters Golf Tournament for Camp Bucko

11. 2015 Council Update

- Council meeting June 13th at 7pm
- Annual Report should be revised to include:
 - Alternative Fuels section
 - CRC detour discussion process
 - St Marys/CRC should take the lead on the Community solicitation to participate in the CRC rather than the municipality

12. 2016 CRC Meetings

- Next meeting September 6th, 2016

13. Outstanding Items

- Ask Wilson Little about when drill holes (in the lake) will be scheduled
- Possible CRC Plant Tour
- Attach CRC Terms of Reference to minutes